

Benedetta
Salvini



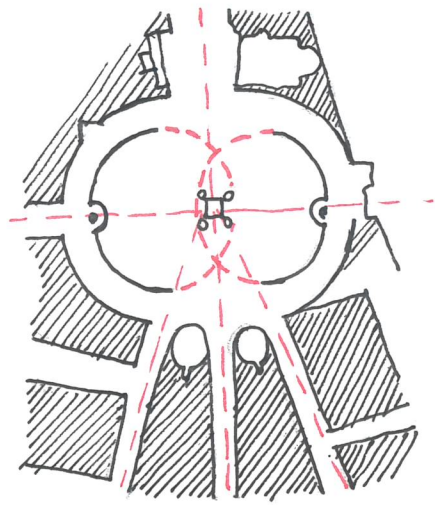
↳ modo di pensare il progetto architettonico

IL PROGETTO: modificazione del suolo. Frutto di un'analisi paziente della realtà.

PRINCIPIO INSEDIATIVO: sistema riconoscibile e descrivibile delle forme nello spazio (es. centralità) [linearità, isotropia, parallelismo, accumulazione]

ORGANISMO:

Roma: PIAZZA DEL POPOLO: stratificazione di 4 interventi in diverse epoche



- mappa di Nolli del 1748
↓
rappresenta in maniera scientifica la città di Roma in relazione agli spazi pubblici.



Impianto seicentesco

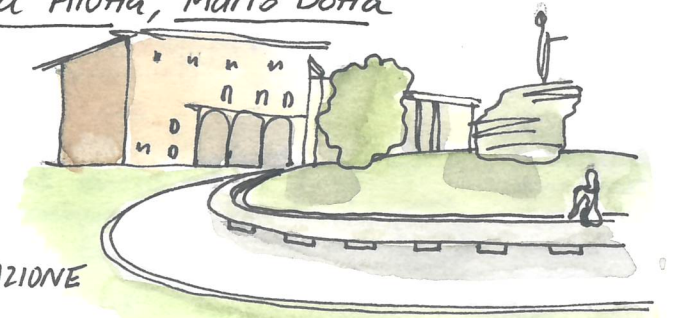
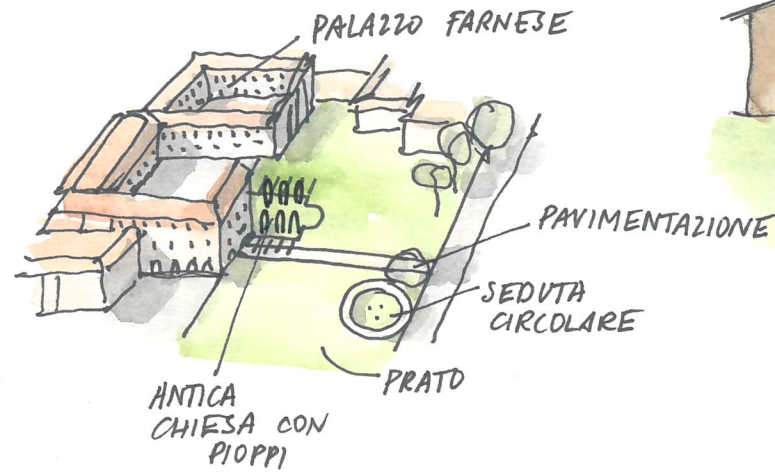
Impianto di Valadier

il rapporto tra organismi è regolato da alcuni principi:

- 1) ISOTROPIA (la griglia, la scacchiera ottocentesca)
- 2) MACRO ORGANISMO (Louis Kahn, l'EUR)
- 3) APPARTENENZA AD UN INSIEME (Plateau di Chandigar, Le Corbusier)

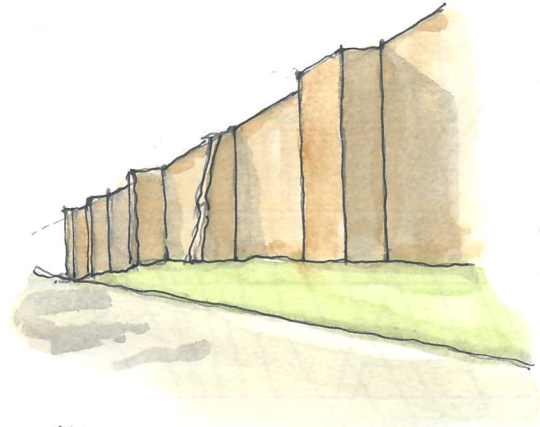
↓
Pisa: campo dei Miracoli → si basa su un principio paratattico

→ Parma: Giardino del Palazzo della Alotta, Mario Botta



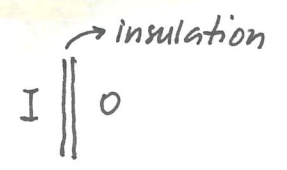
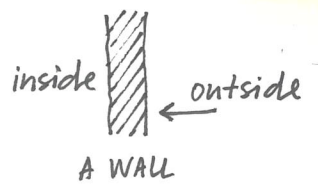
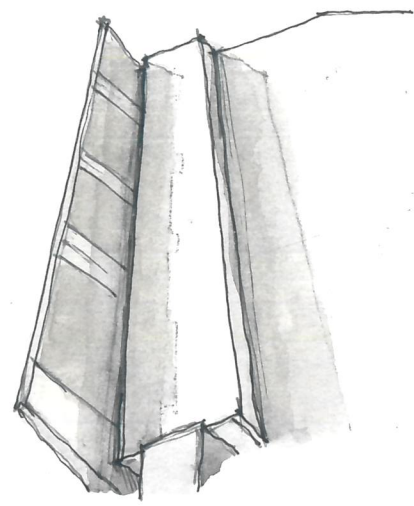
ROMA → luce
→ paesaggio
→ storia

"Il monumento superato il rapporto con la storia, diventa geografia."
[Aldo Rossi]

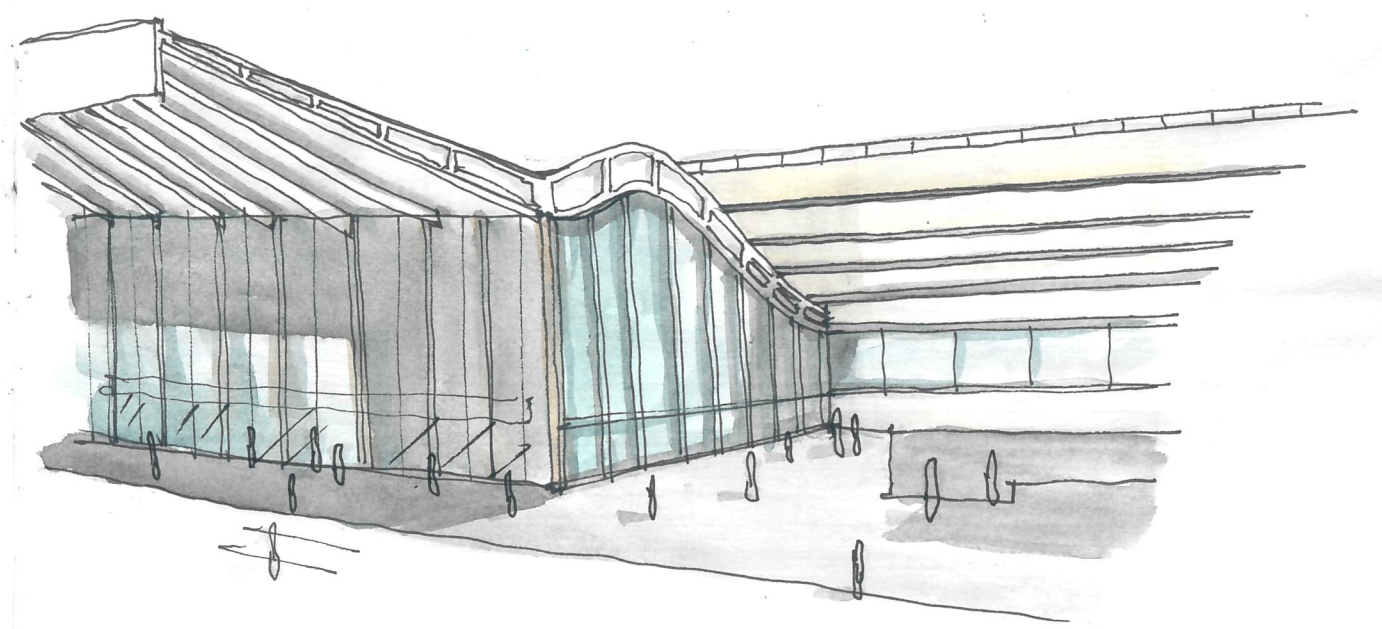


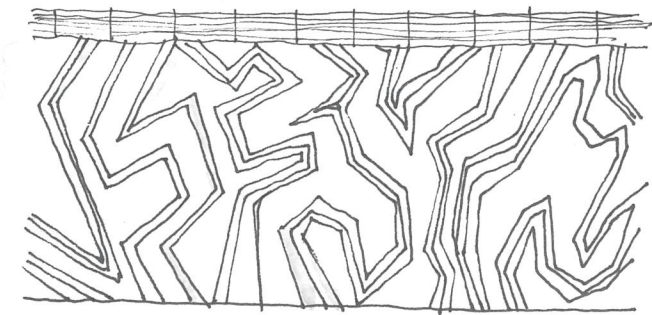
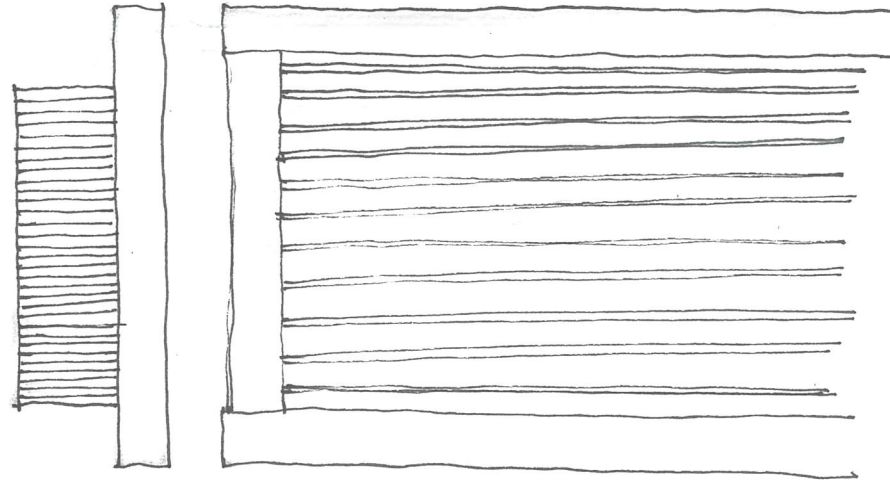
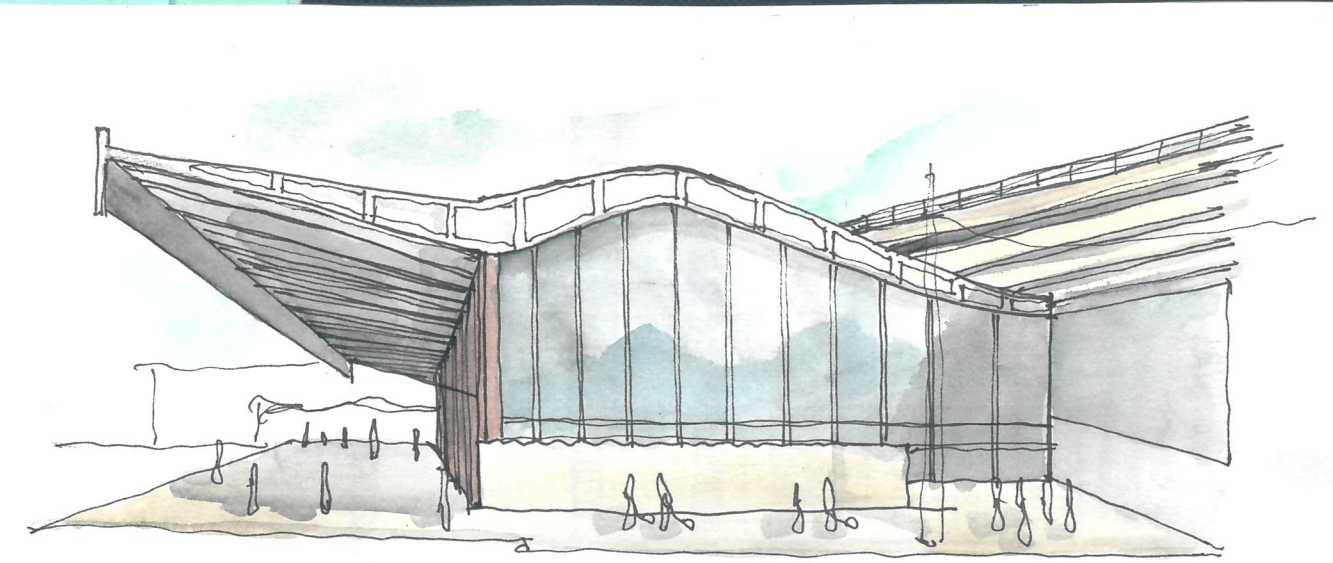
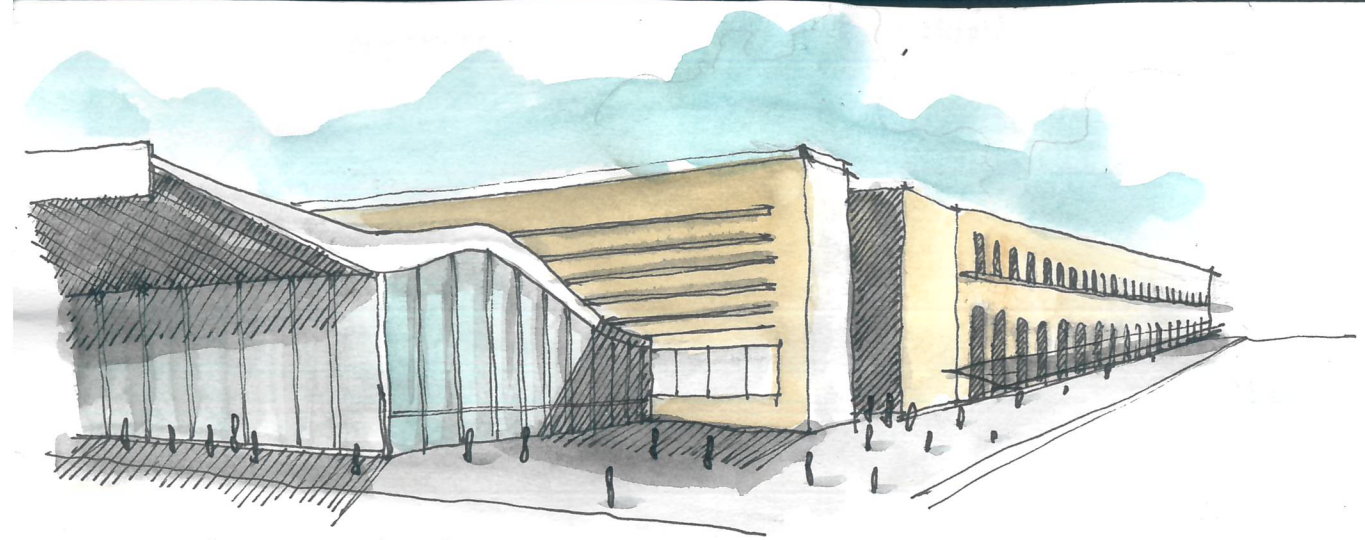
MURO pesanterza
Mura Aureliane

(vs) PARETE leggerezza
→ Palazzina del Girasole



Consider the inside and the outside as through

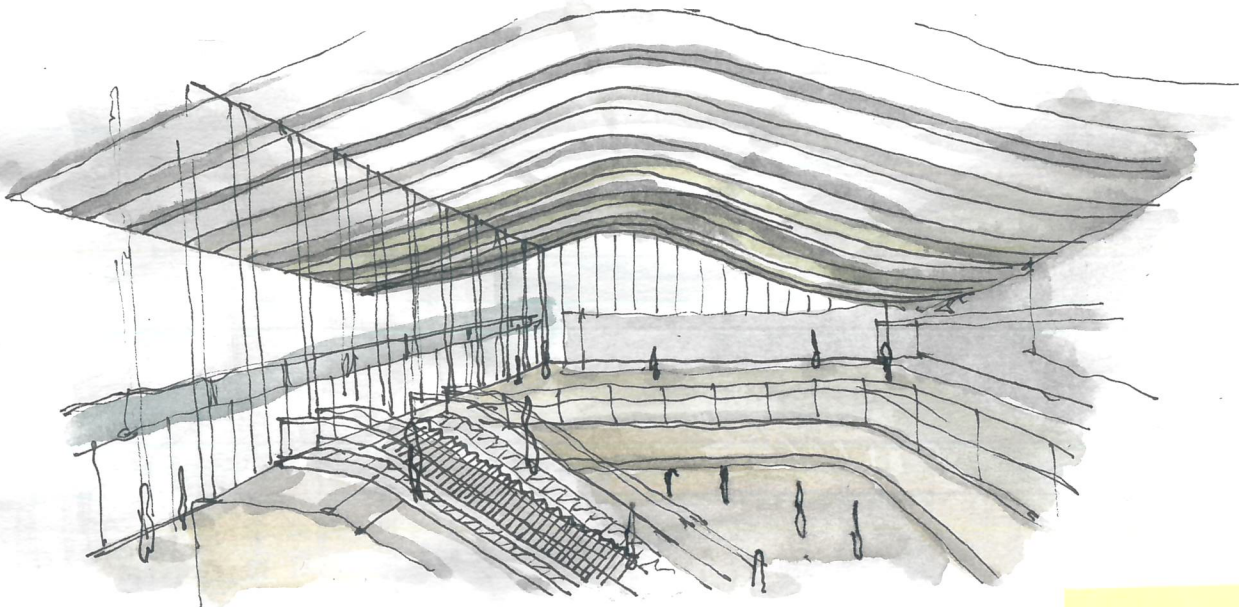




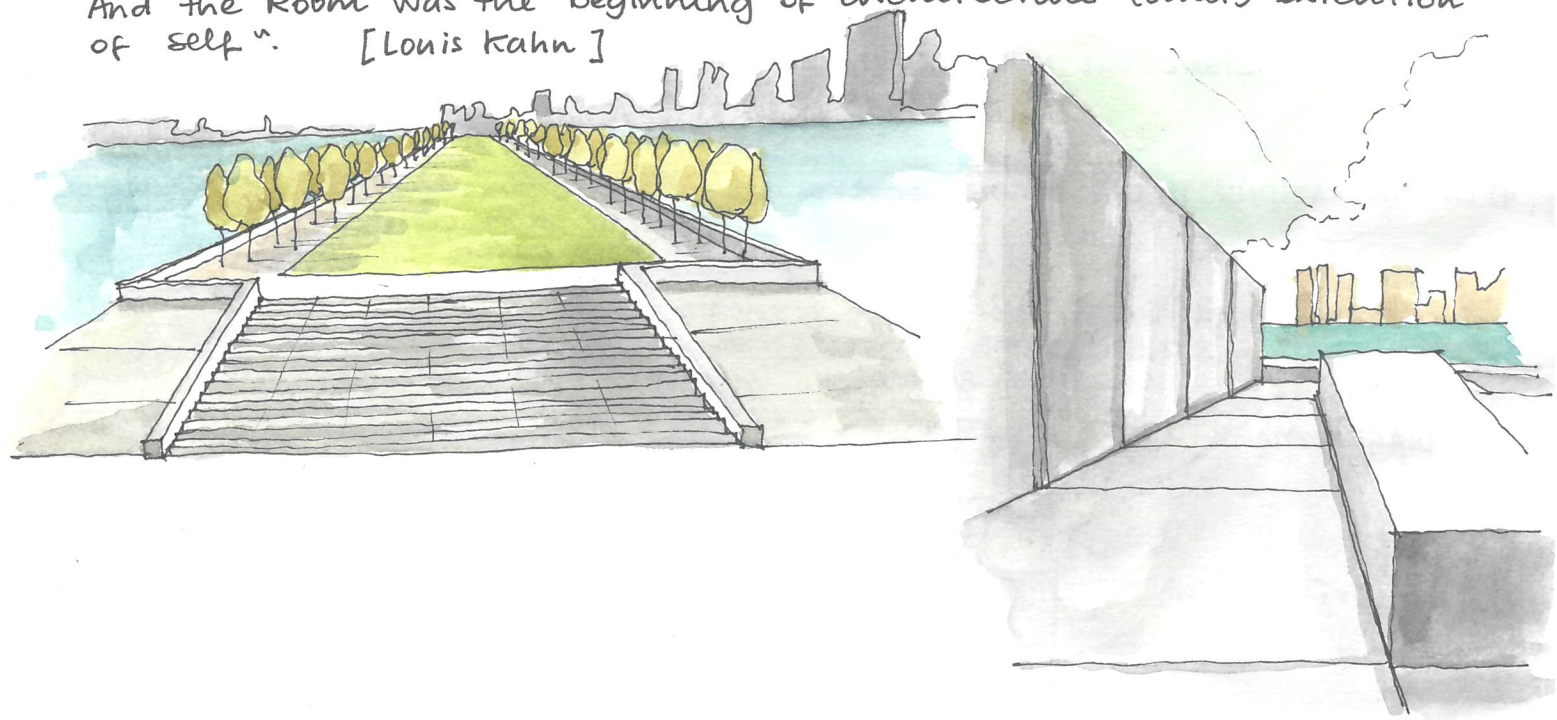
molto bene!
😊

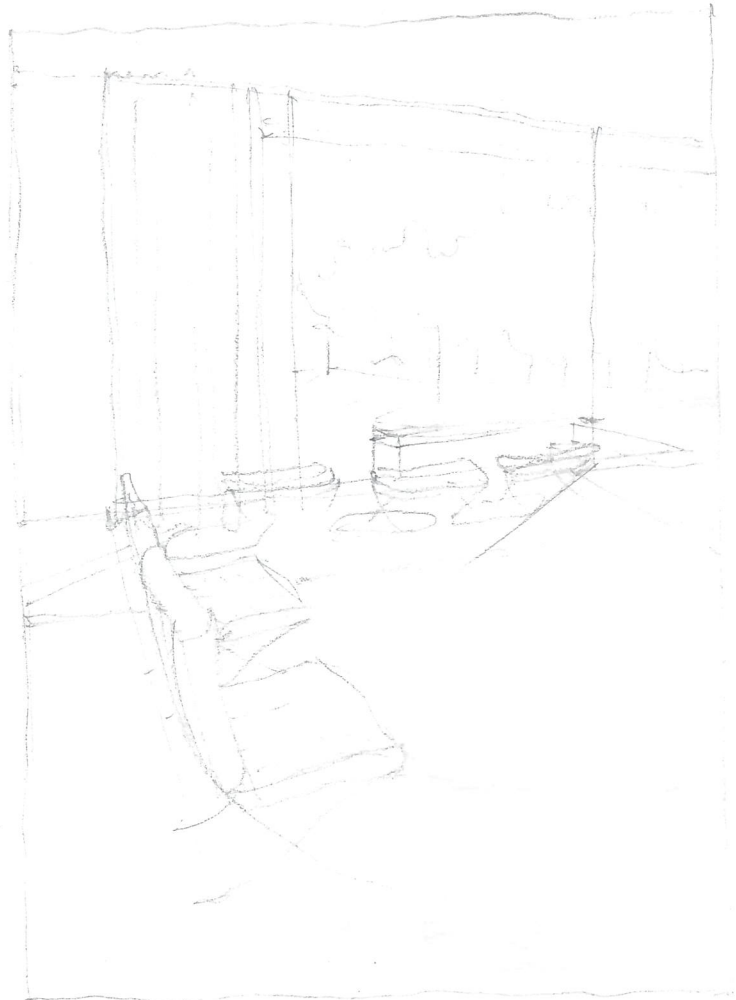
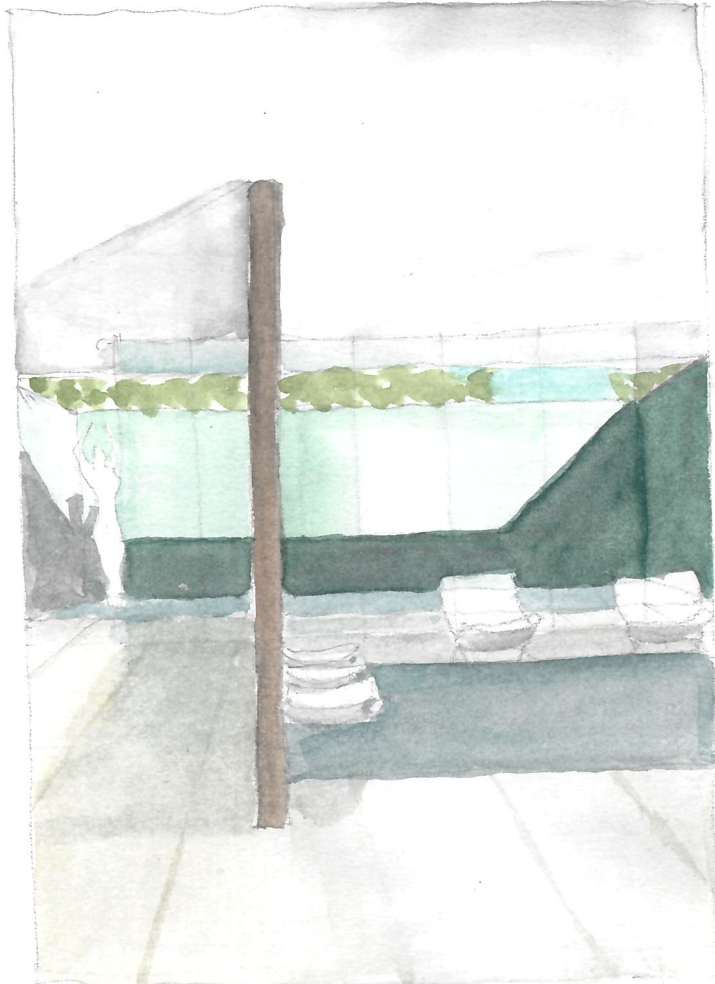
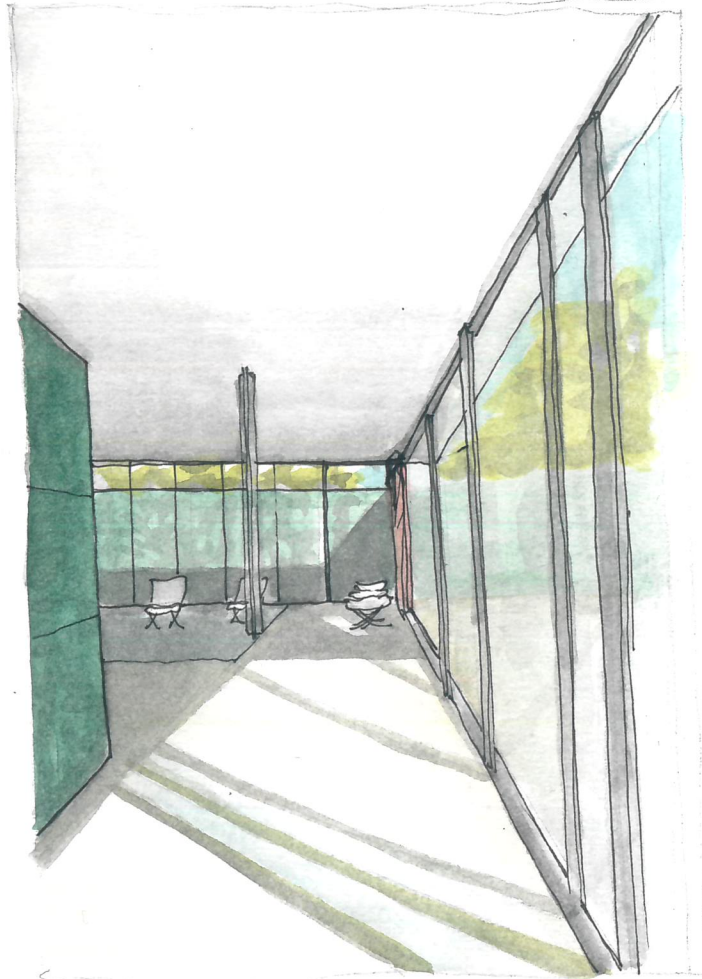
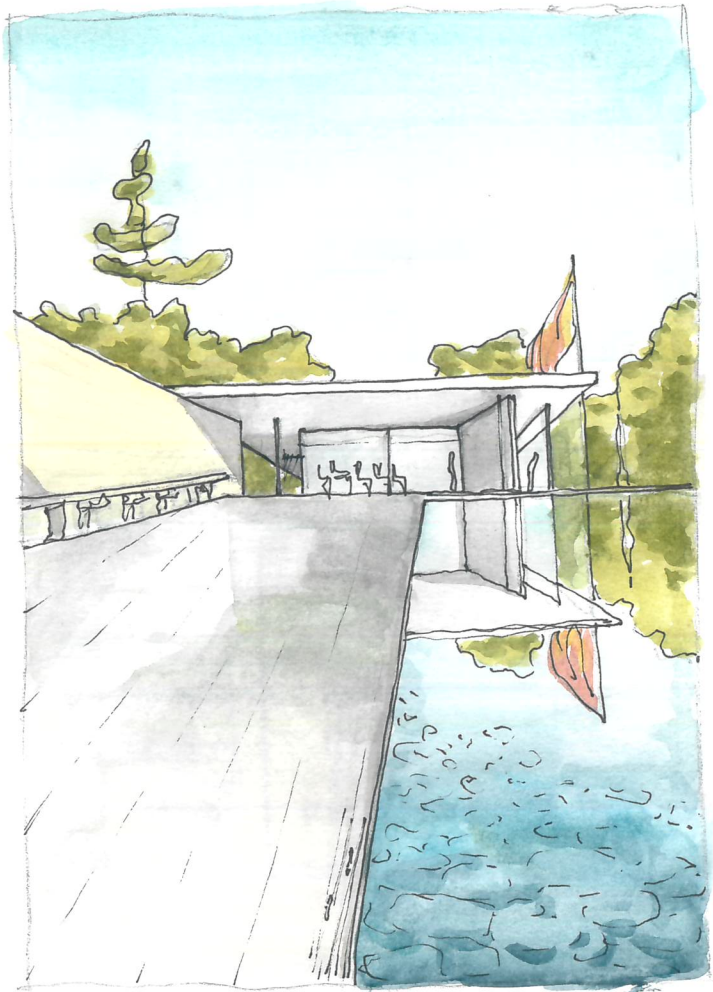
LEZIONE N°7

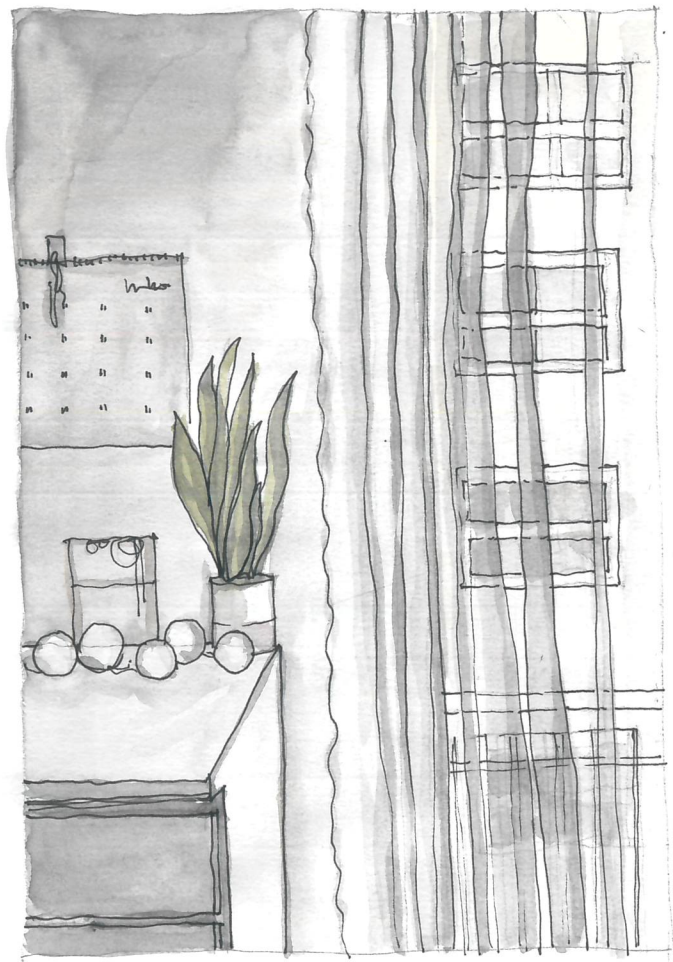
"I had this thought that a memorial should be a Room and a Garden.
That's all I had... I just choose it to be the point of departure.
The Garden is somehow a personal nature, a personal ~~room~~ kind
of control of nature, a gathering of nature.
And the Room was the beginning of architecture (and) extention
of self". [Louis Kahn]



molto bene!



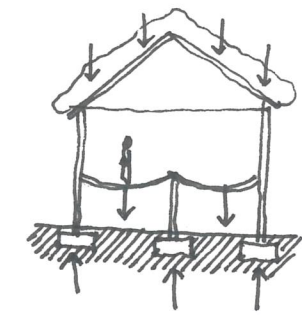




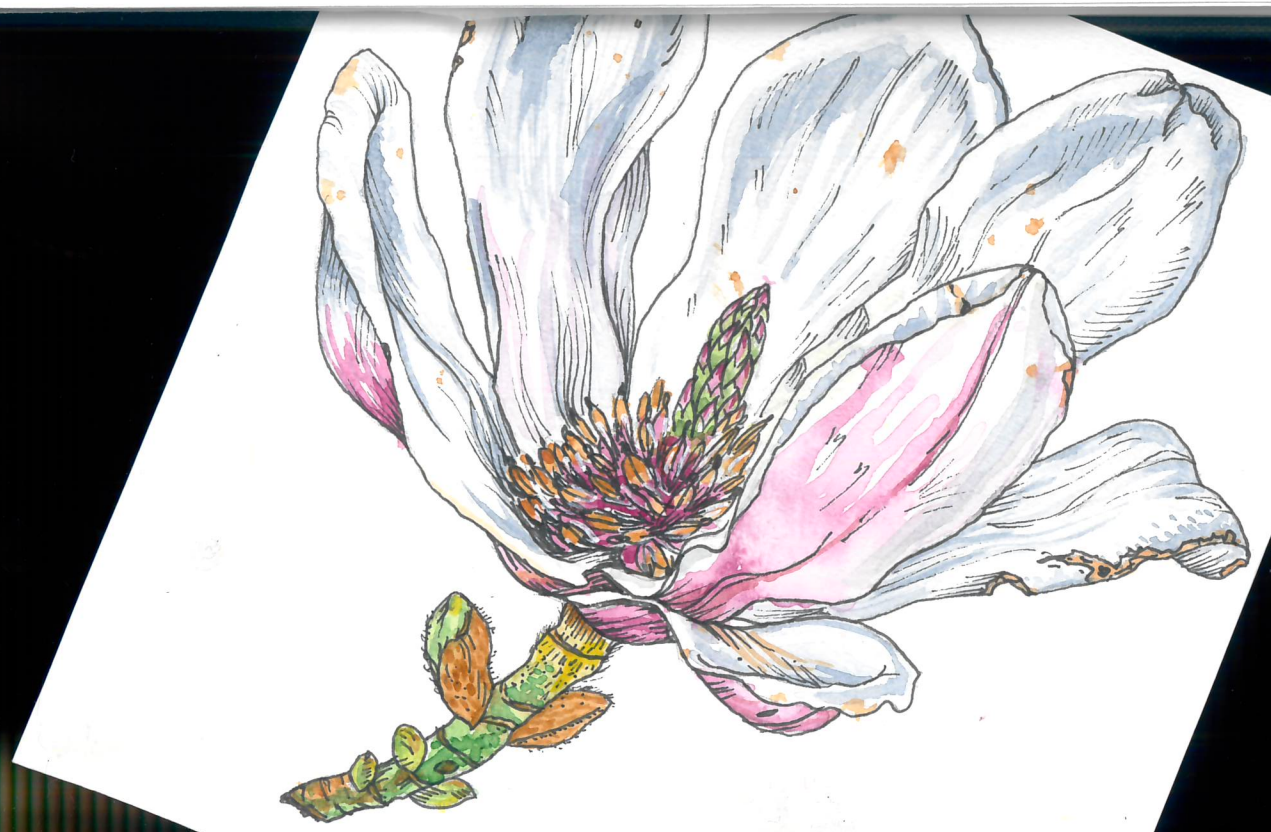
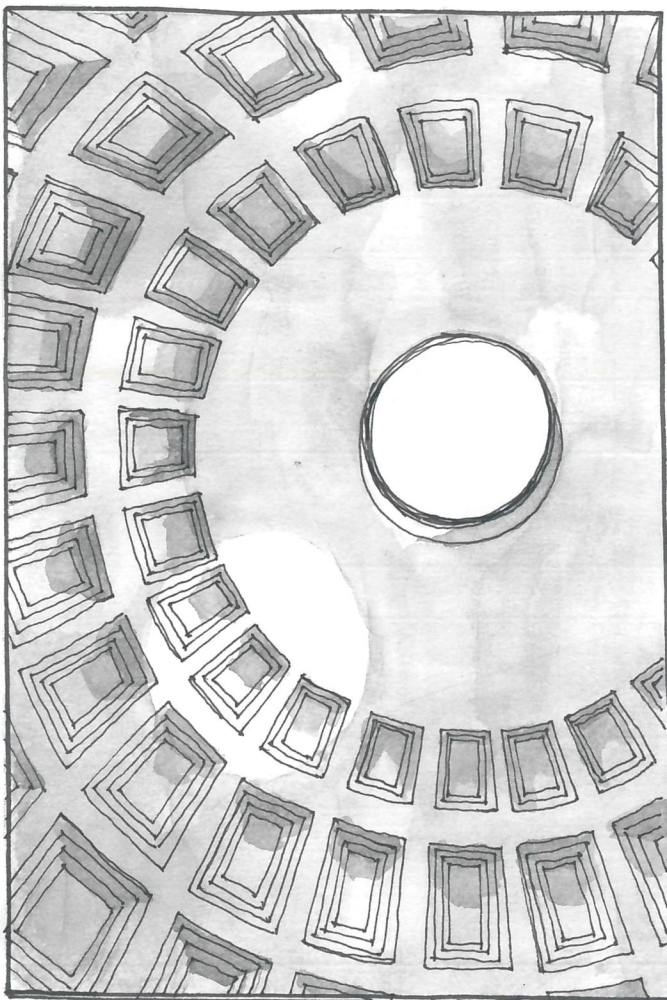
LA STRUTTURA

↳ il complesso di opere specificatamente dedicate a sopportare i carichi che gravano su un'architettura e necessarie per la stabilita' dell'insieme

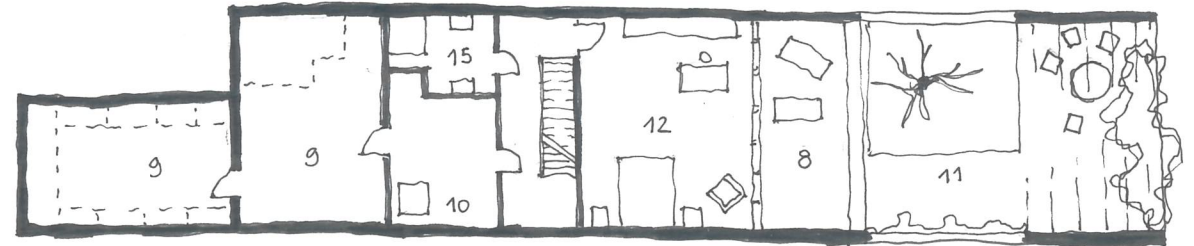
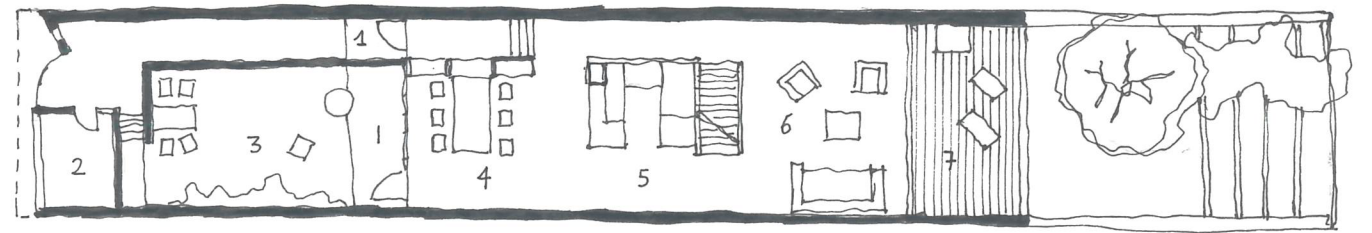
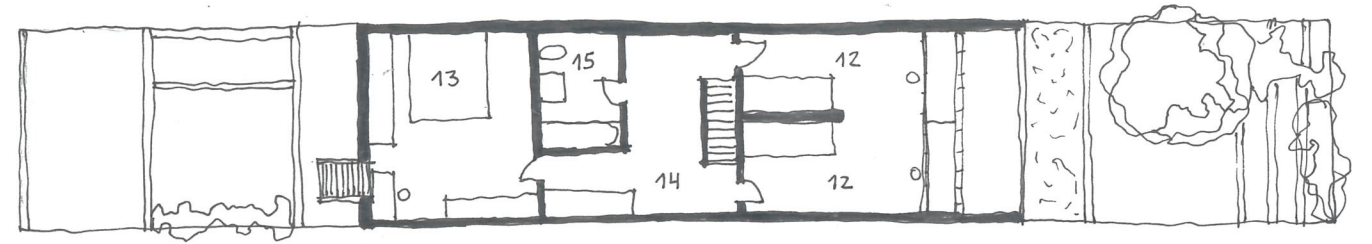
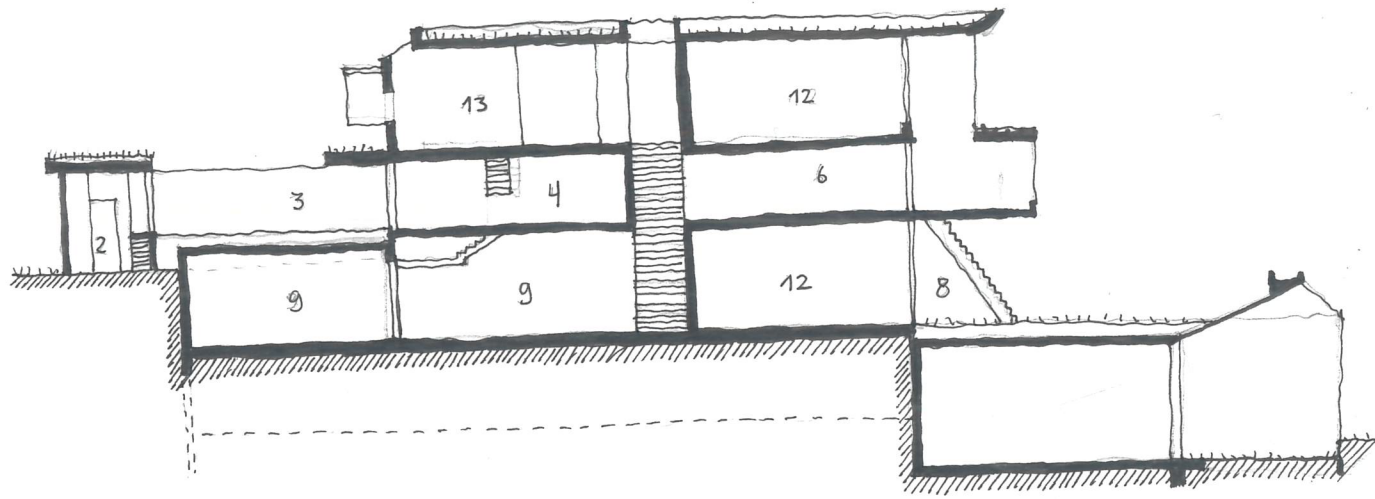
- CARICHI STATICI: sono il peso proprio della struttura, cioe' i carichi permanenti sulle strutture ed i carichi accidentali o sovraccarichi gravanti sulla struttura in modo non permanente.
- CARICHI DINAMICI: sono forze di cui variare l'intensita', come l'azione sismica.



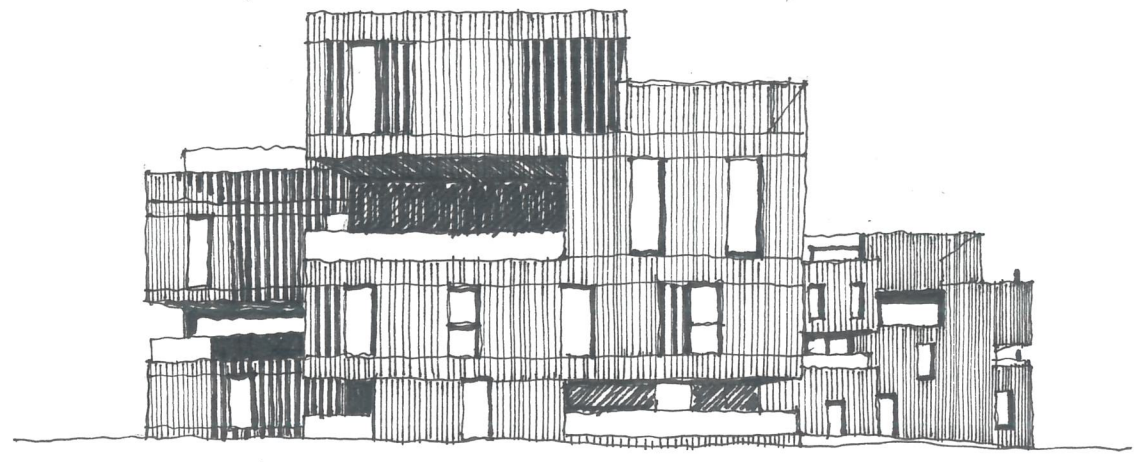
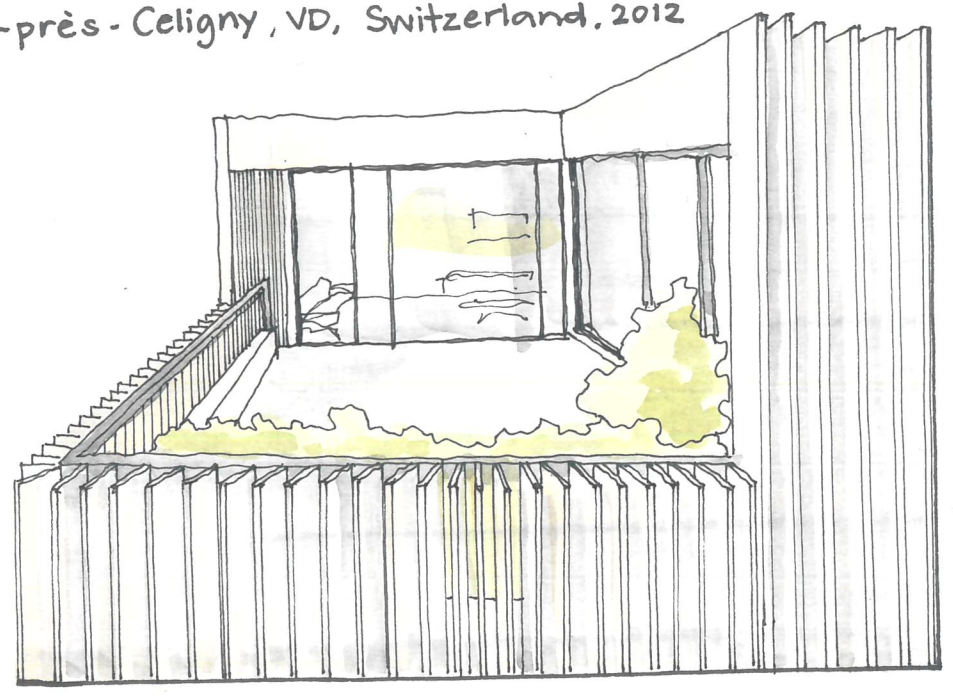
- I carichi possono essere considerati concentrati se agiscono su una superficie piccola e possono essere pensati come agenti in un punto della struttura, oppure possono essere considerati distribuiti se la loro azione e' distribuita su una superficie sufficientemente ampia.
- La struttura tende a reagire ai carichi con forze di reazione espresse dai vincoli (reazioni vincolari).
- La struttura e' in equilibrio statico quando le reazioni vincolari ed i carichi si annullano a vicenda creando un sistema a risultante nulla.

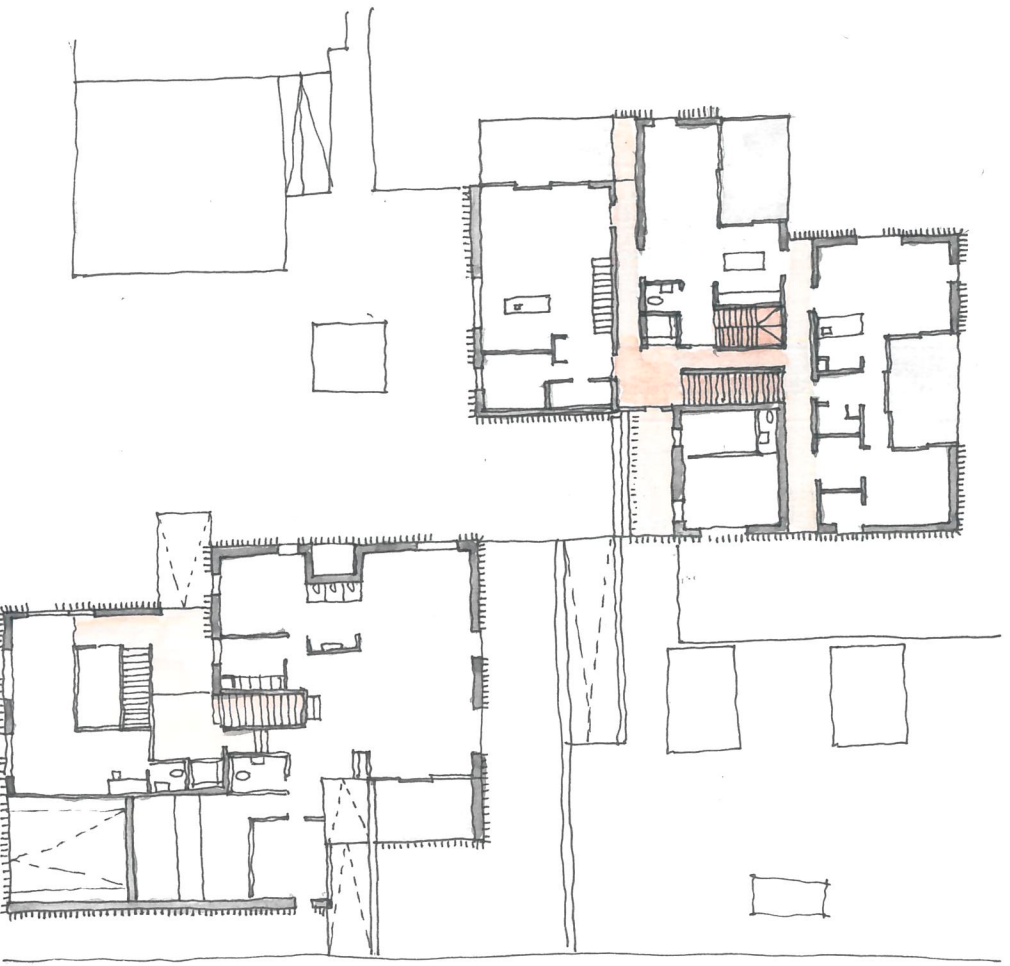


Siedlung Halen - Atelier 5, Herrenschwanden, Bern, Switzerland, 1955 - 1961



Group B Architects - Striped Living,
Crans-près-Celigny, VD, Switzerland, 2012





CASO STUDIO : *Striped Living, Group 8 Architects, Crans-près-Celigny, VD, Switzerland, 2012*

