

COHOUSING

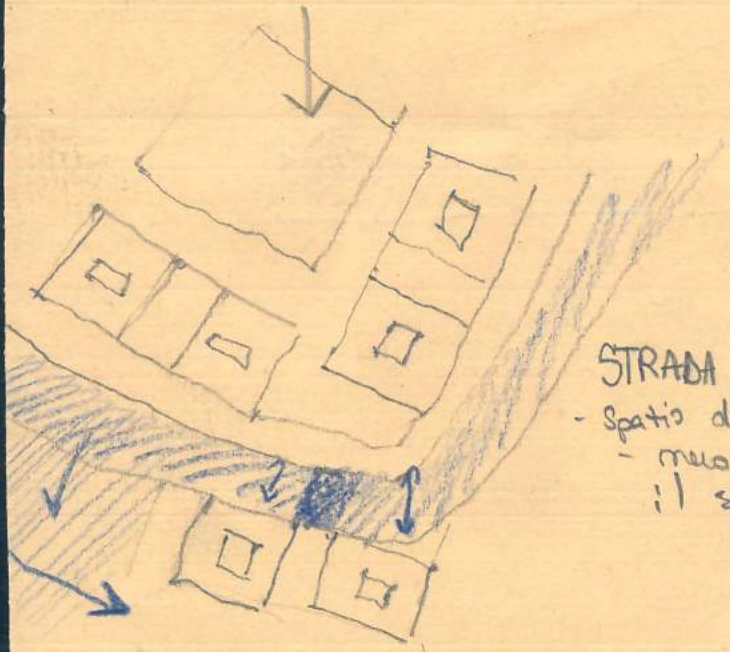
- > Participatory process
- > Neighbourhood design
- > Common facilities

+

VILLE SPATIALE

- Isolation
- Density
- Lack of quality

- Structural skeleton (grid), supported by columns
 modules that can accommodate all kind of junctions.
 base of the grid 6x6m



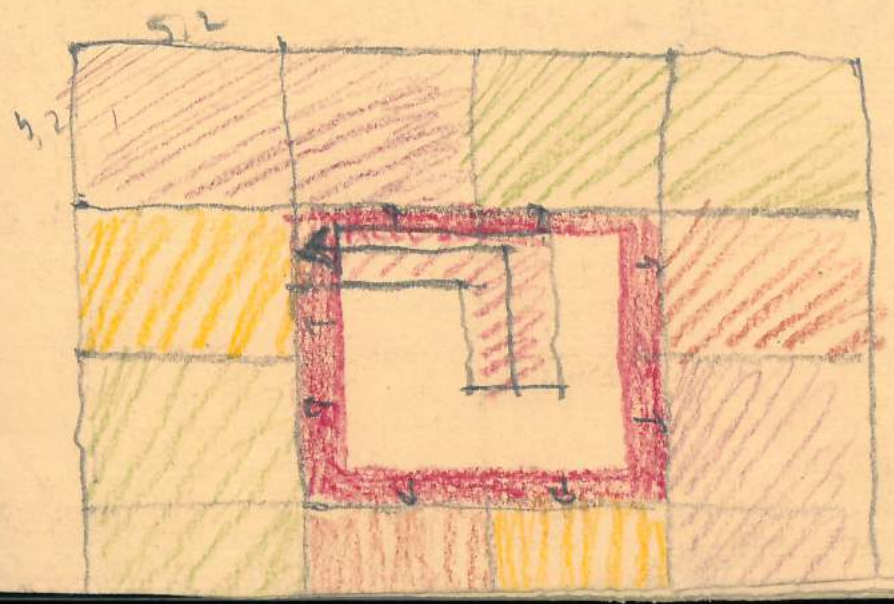
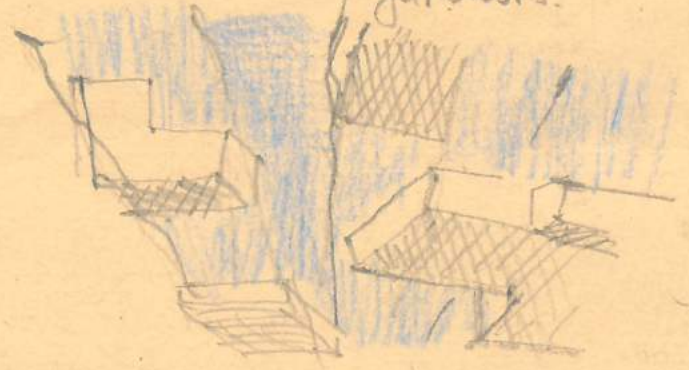
STRADA

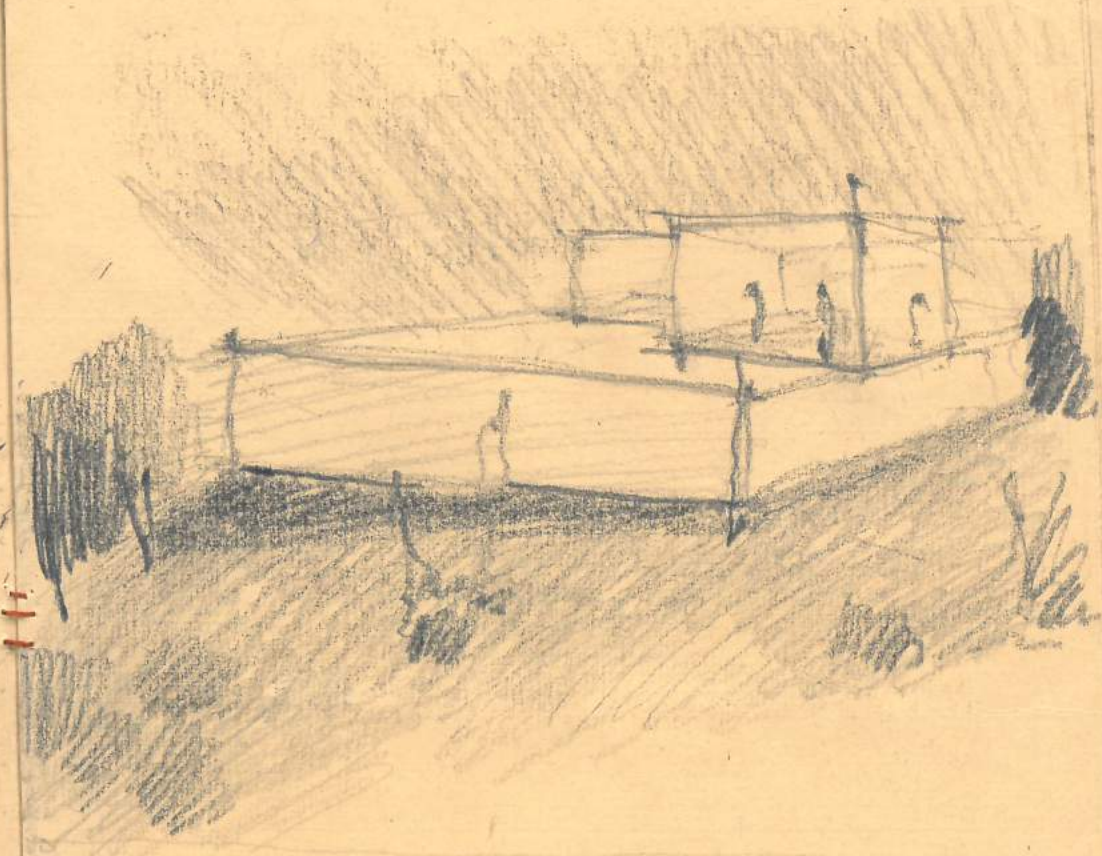
- Spazio di generare scambi
- nuovo modo di abitare il spazio

+

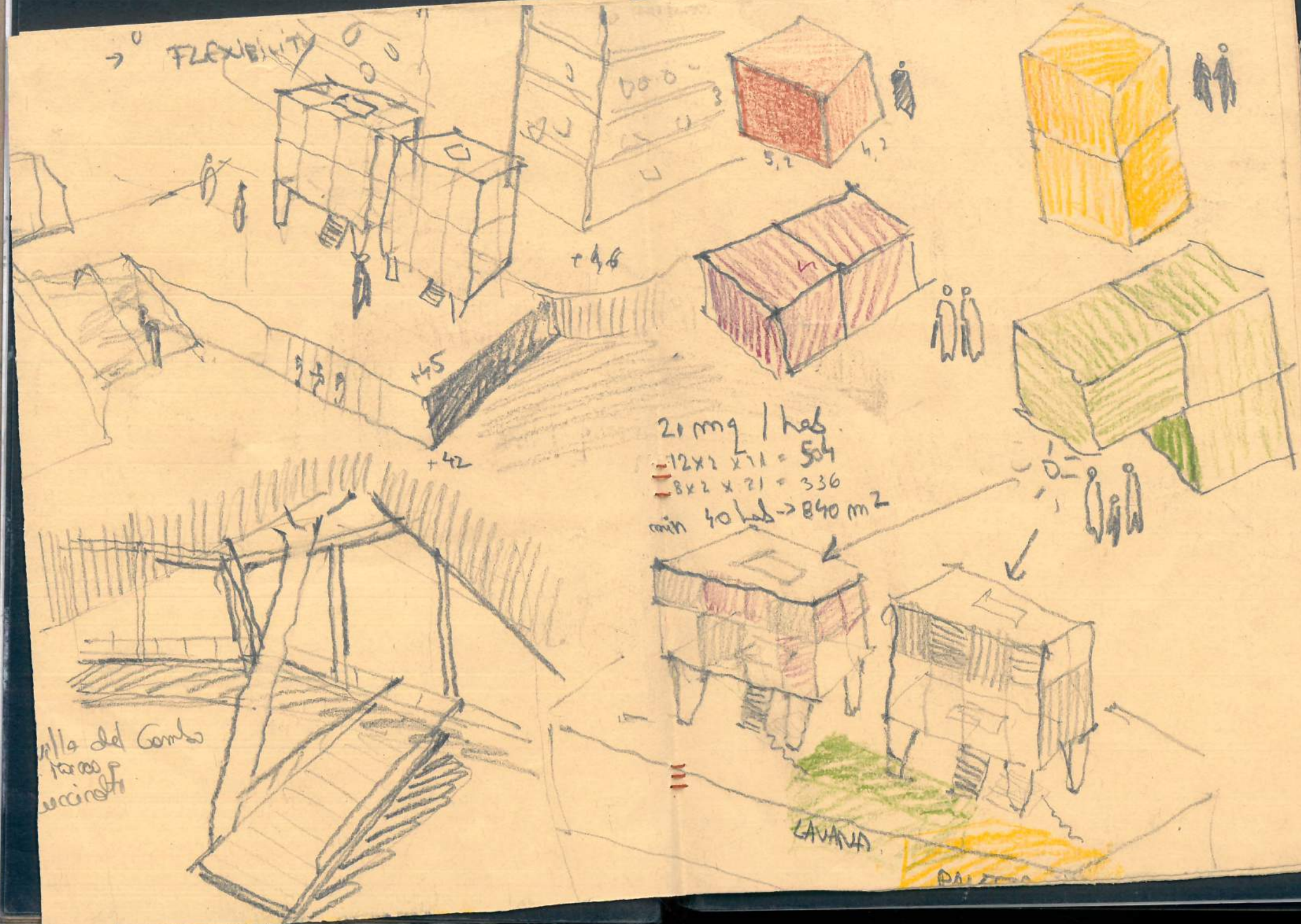
Diversita di tipologia di case -> bisogni
 che non unite

- NO FLOORS + CEILING -> gas, water, electricity is standard panels
 between the units, a structural insulated
 with typical insulation





→ 0 FLEXIBILITY



20 mq / hab
 - 12x2 x 71 = 504
 - 8x2 x 21 = 336
 min 40 hab → 840 m²

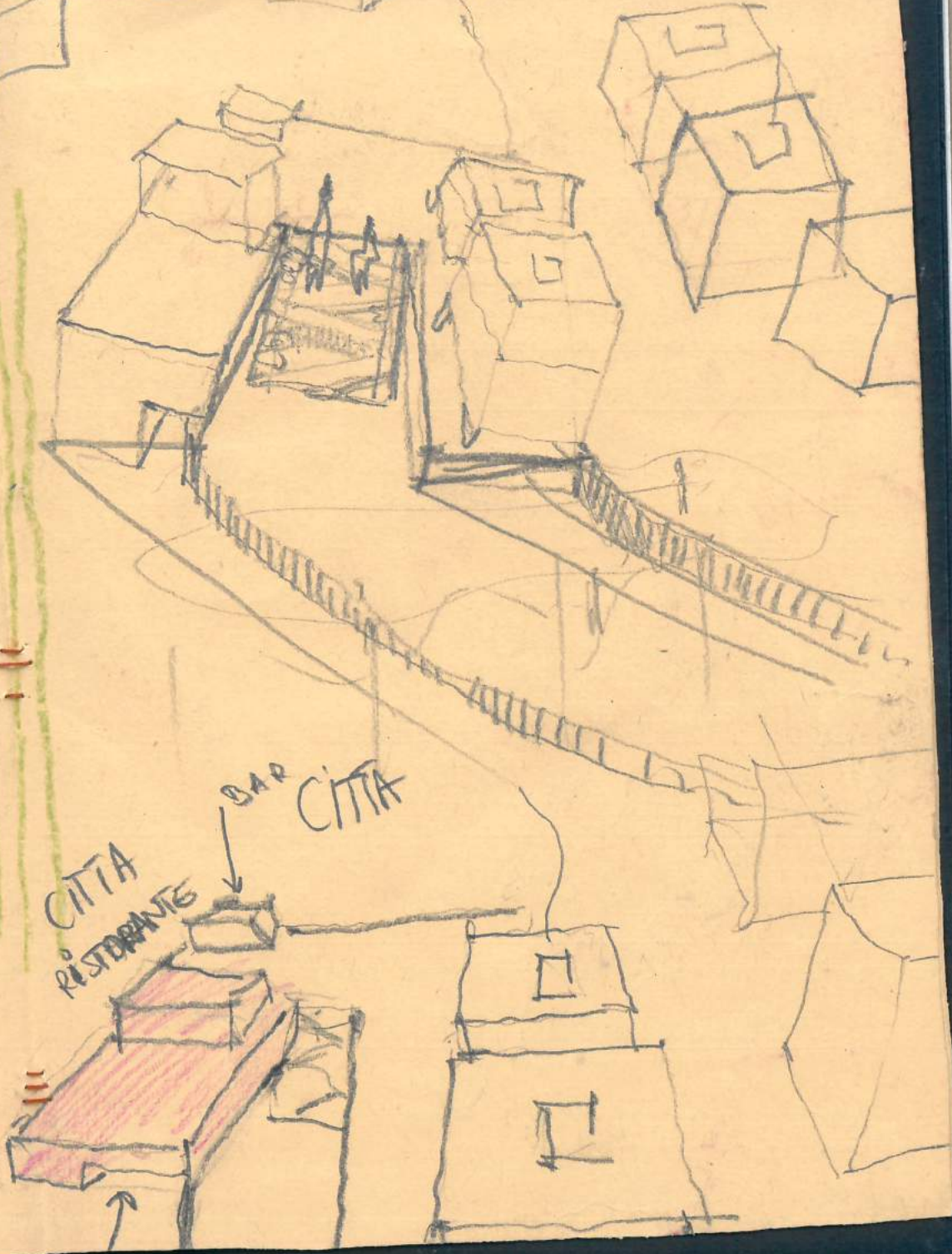
VILLA del Combo
 parco p
 vicinati

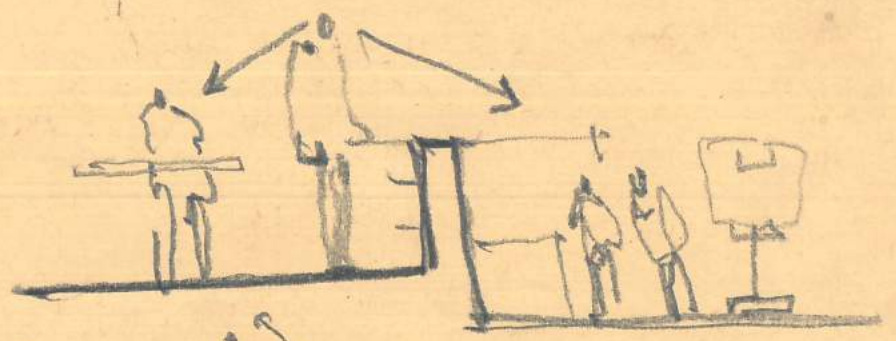
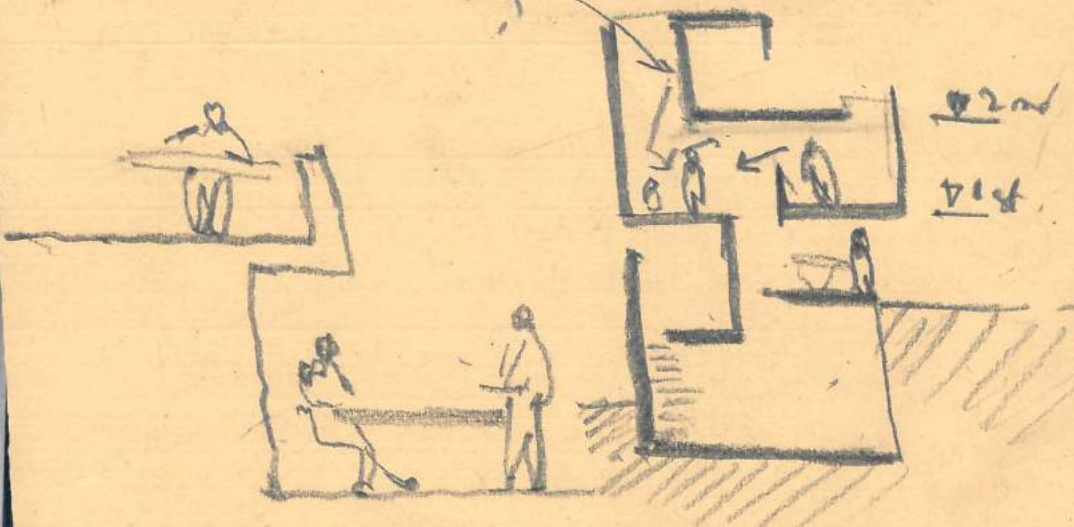
LAVANDA

PALAZZO

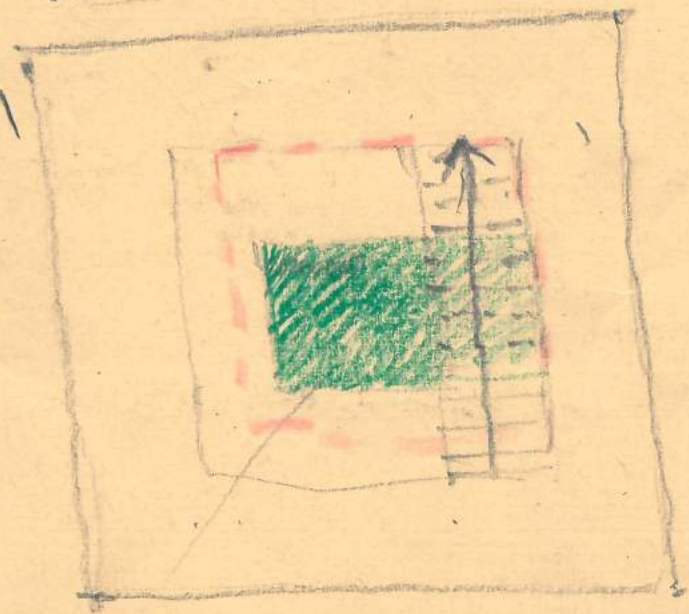
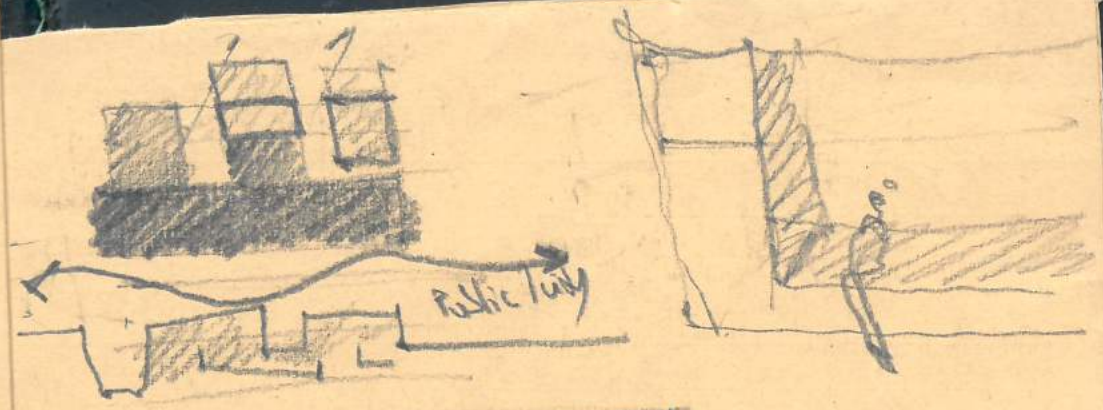
• Conexione -
permeabilità
longitudinale

• Borda della città -
residenza uomo
comune

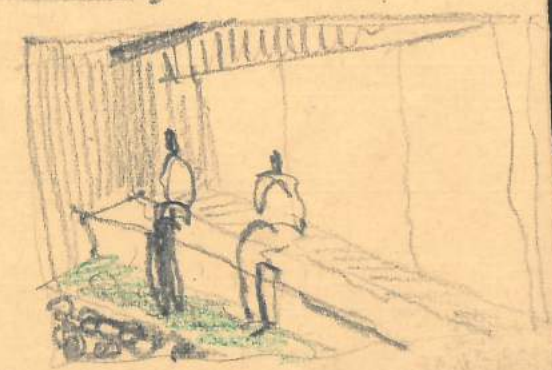




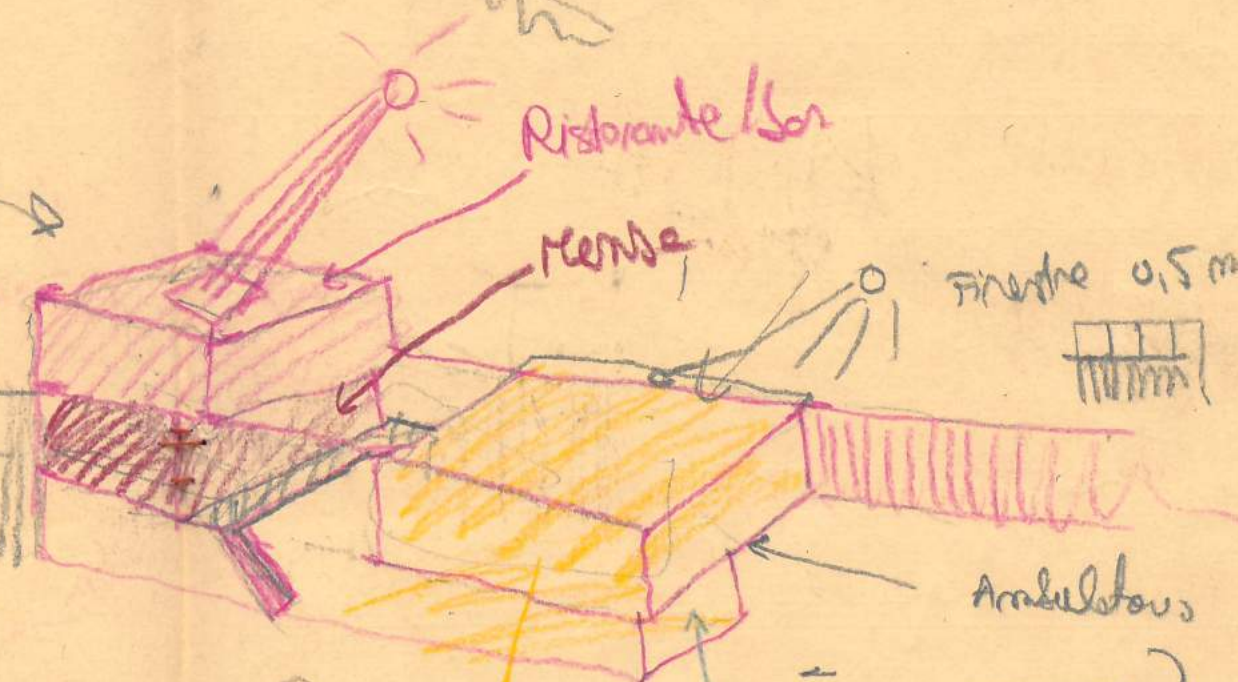
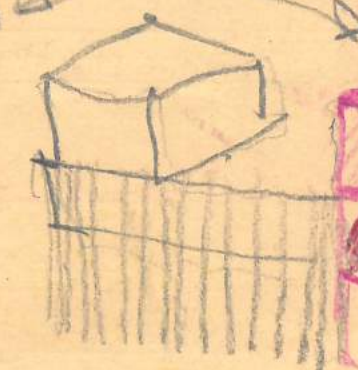
Handwritten notes in Arabic script, possibly describing the layout or function of the space.



water

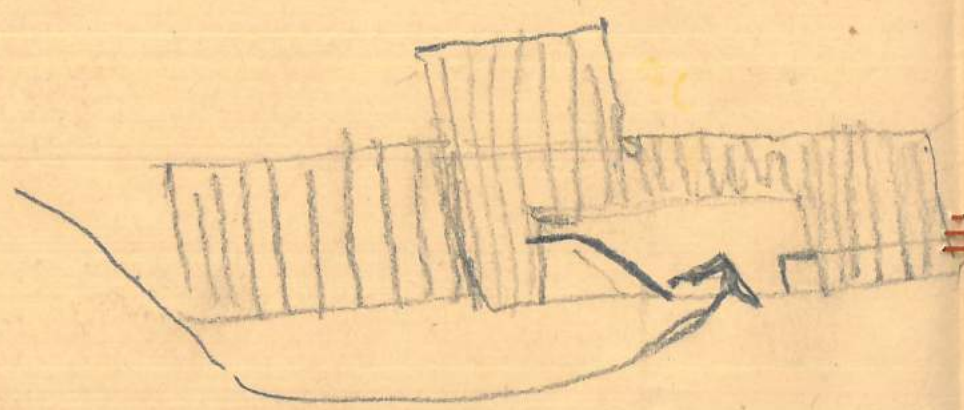
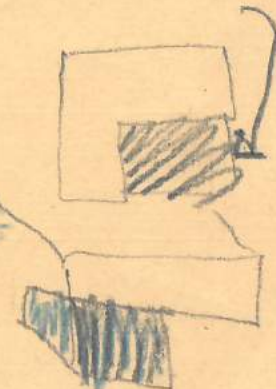


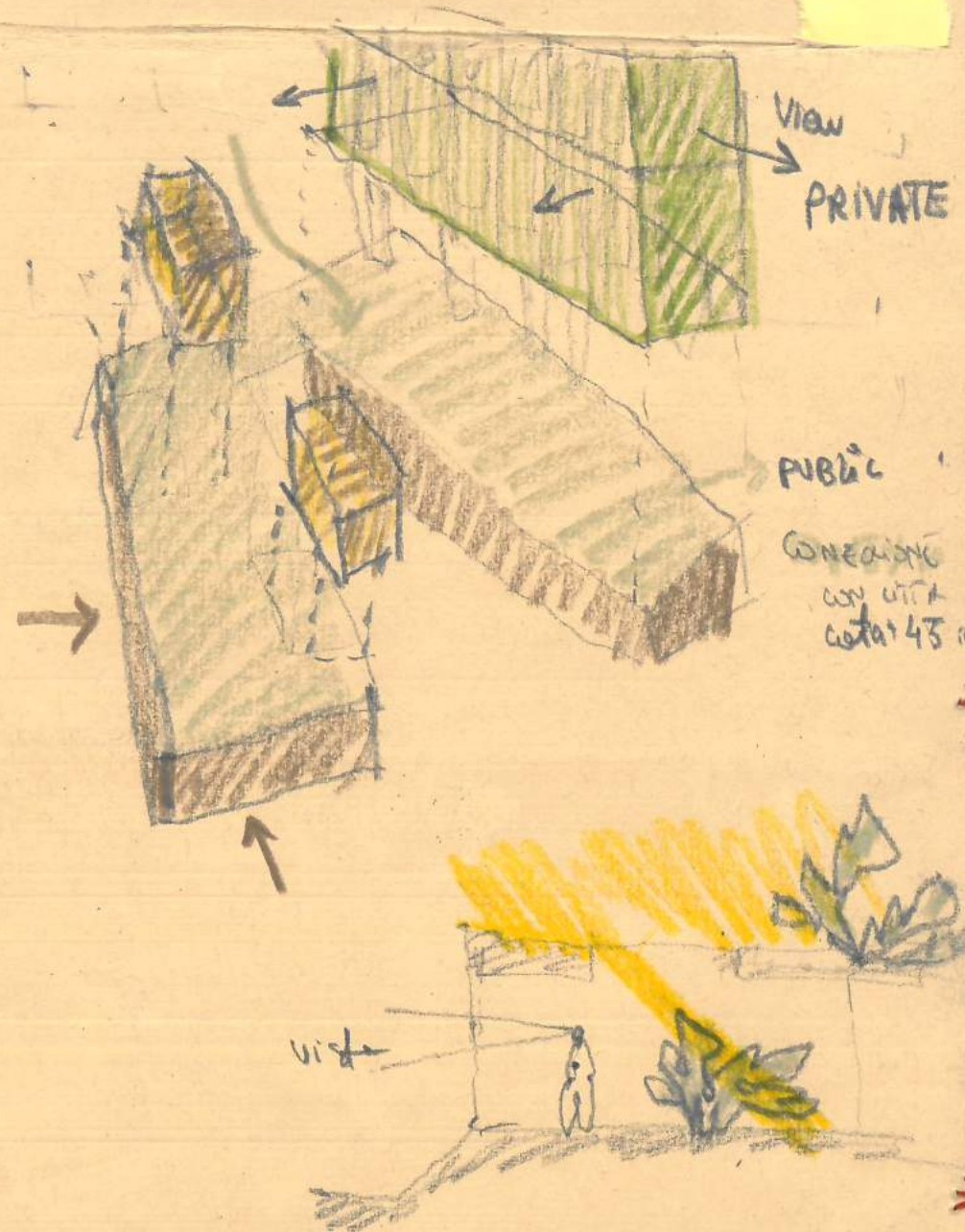
STATIONE



SP
STUDIO
SCUOLA

OFFICE





View
PRIVATE

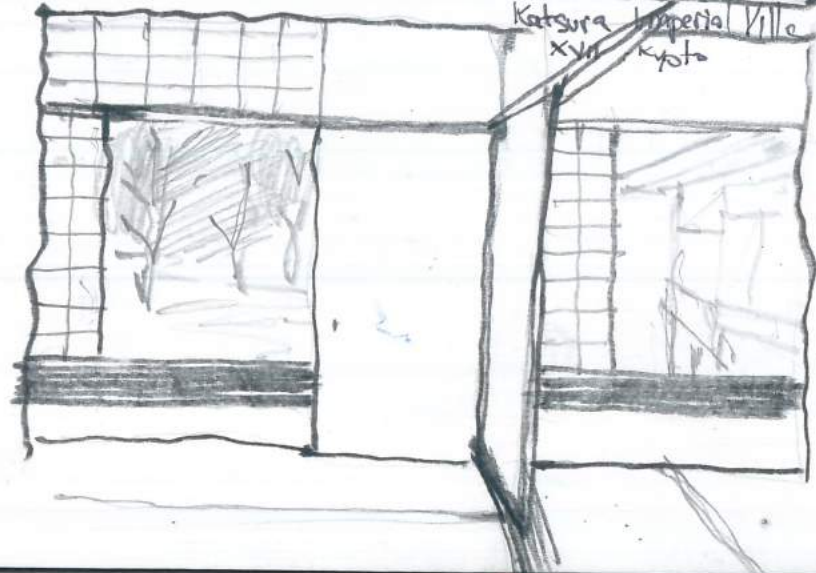
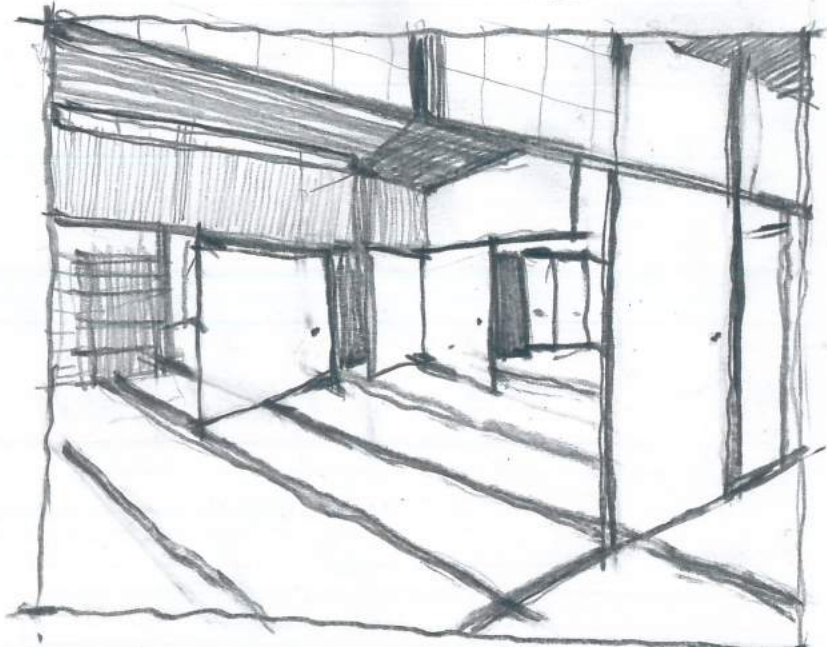
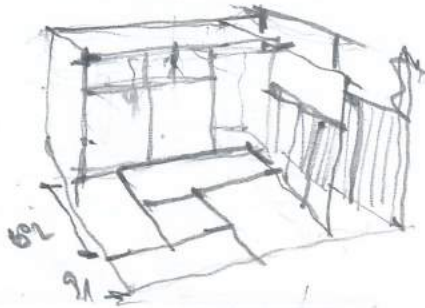
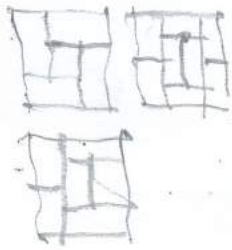
PUBLIC
CONNECTION
CON UTA
COSTA 45

vista

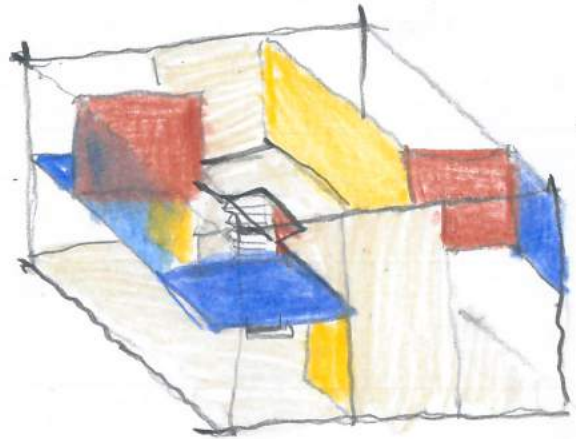
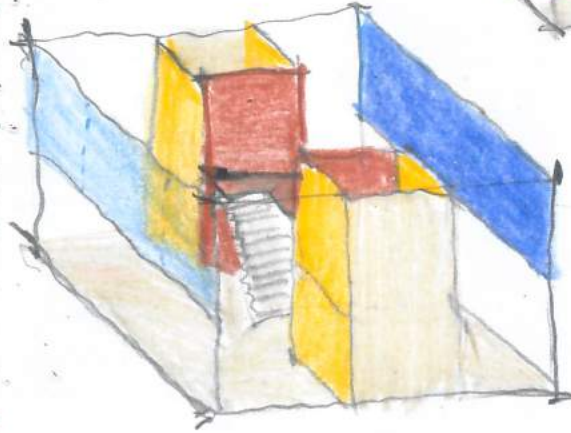
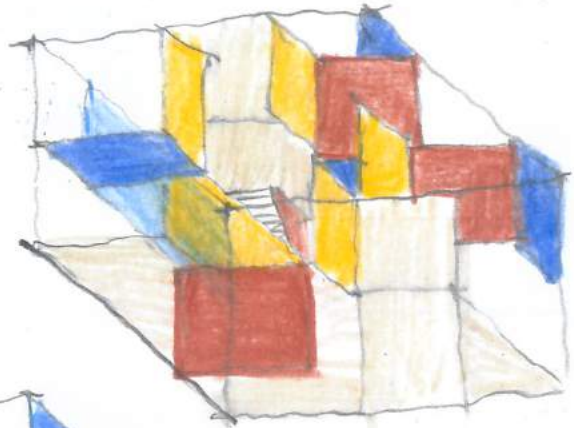


House on Pali Hill
Studio Mumbai

FUSIMA

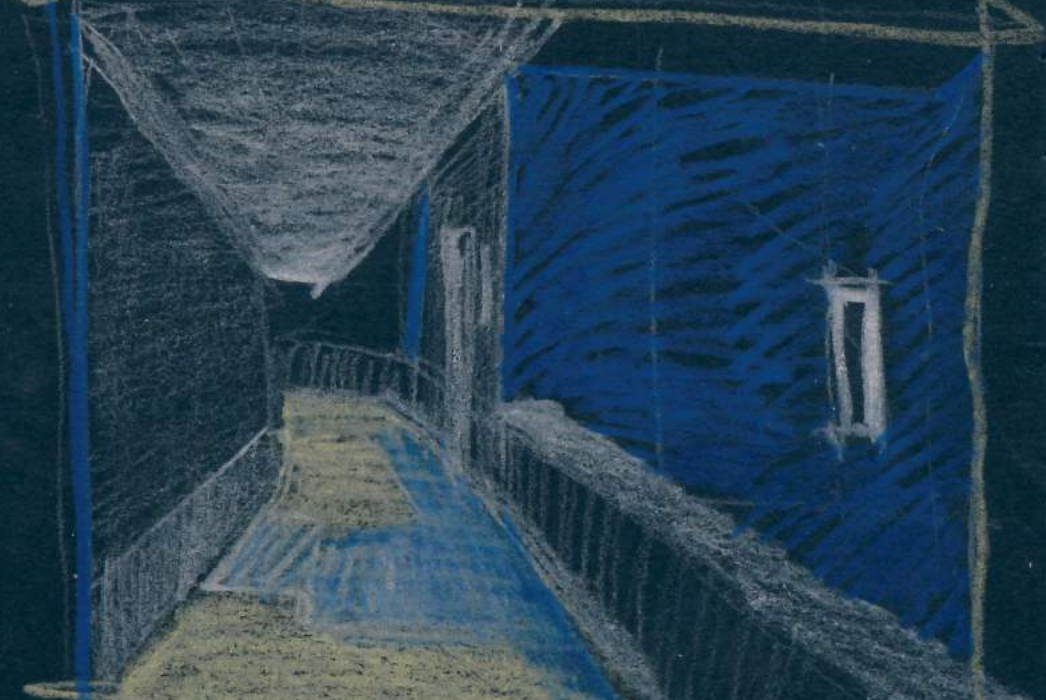


Katsura Imperial Villa
XVII
Kyoto





The access → exterior corridors → alternative of open and closed spaces, light and shadow

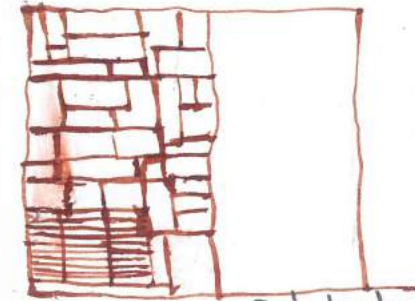


Each of the corridors - different spatial relationships

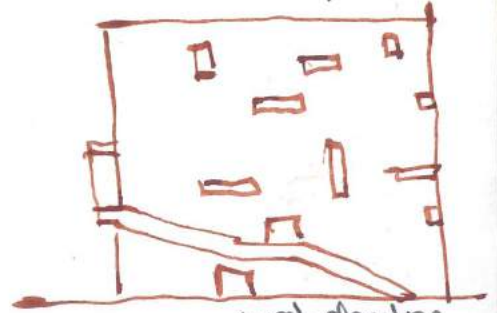
- Relationship of the building with the place → basic principle of traditional Japanese arch. → modernization of the principle → flexibility - house work for residences - space articulation → expanding room during day → recover the space at the night



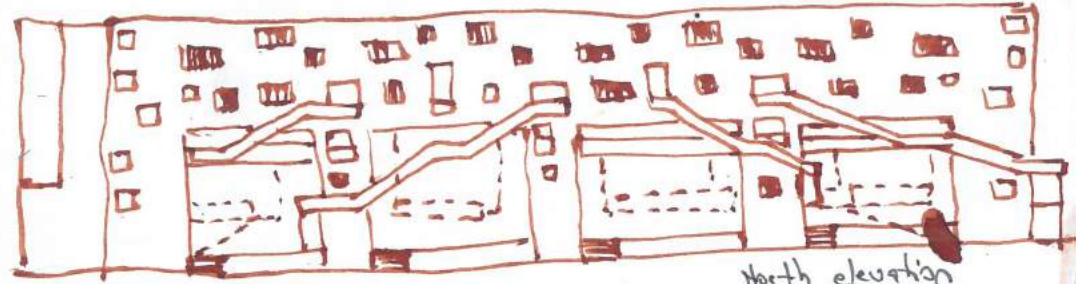
South facade



East elevation



West elevation

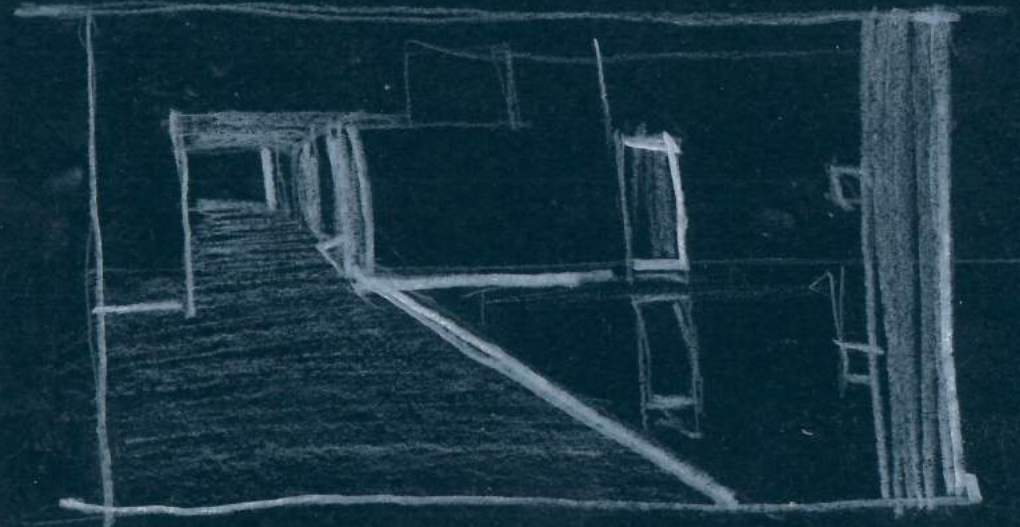


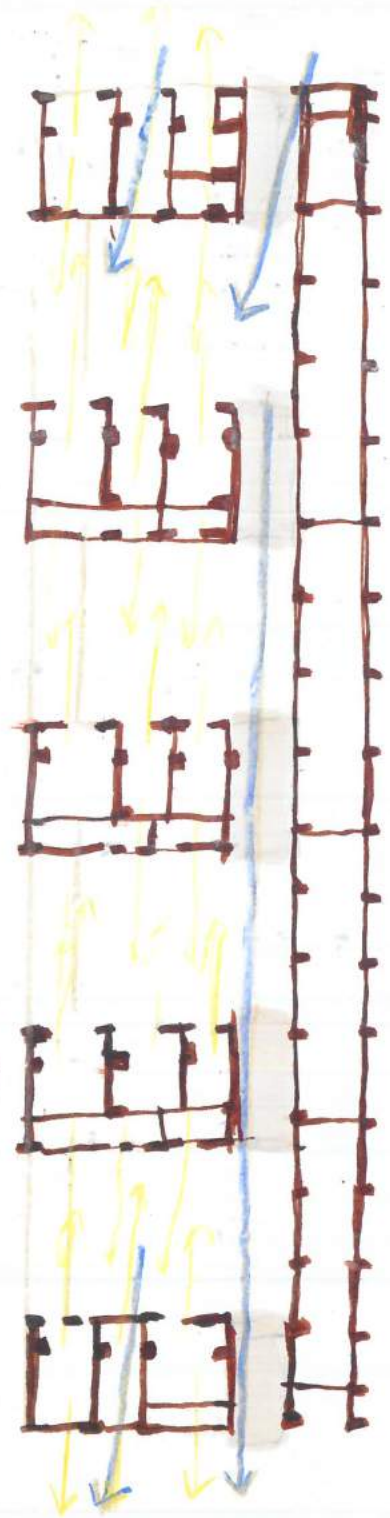
North elevation

- human dimension with individual differences. Each of 28 ap. is unique
 - the access of apart. is through corridors, which also allow connecting various gaps, offer an alternative of open and closed spaces, light and shade. Each of 3 corridors - different spatial relationships - inside or on the side of the courtyards, open to the city, the park or the sky. → increase the spatial euphoria of movement. Go from public space to private - control of orientation, intertemporality of light and calm + beauty of water. Empty space as a room - being sacred meaning



SOUTH | VOID + WATER → Space meditation
NORTH → COMMUNITY GARDEN, PLAYGROUND
TERRACES, CAFE GROUND FLOOR

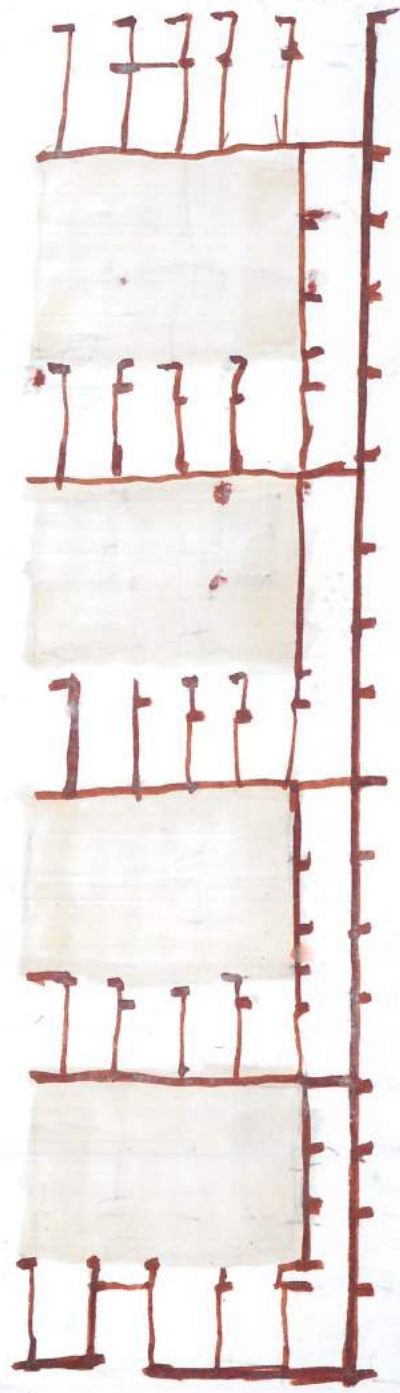




VOIDS

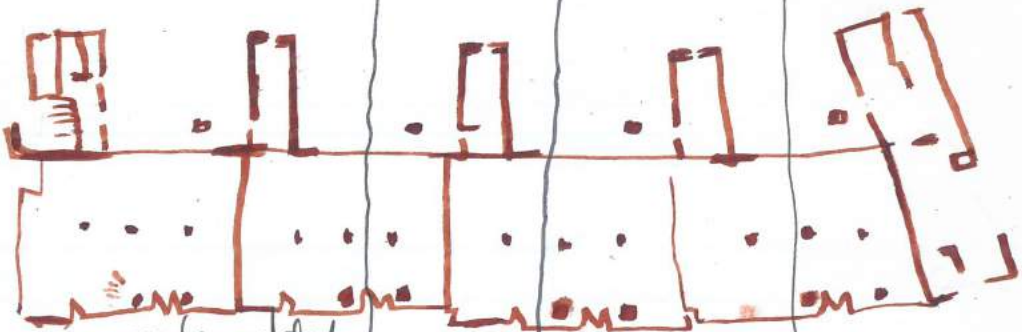
VENTILATION

VIEWS



Structure - concrete load-bearing walls with a secondary structure of pillars at the mid points of the main bays, which correspond to the empty spaces. The E facing facade aluminium enclosure panels, W and N show load bearing walls

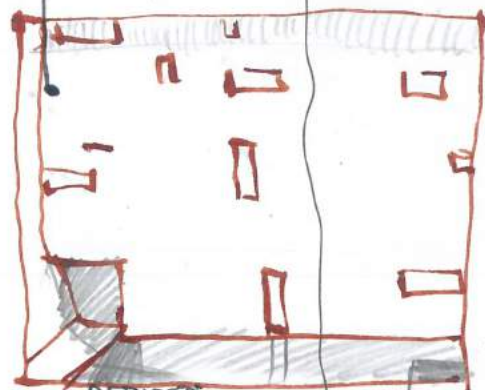
- allow expansion of diurnal area during day



- room can be added or subtracted



PUBLIC WALKWAY (VOID)

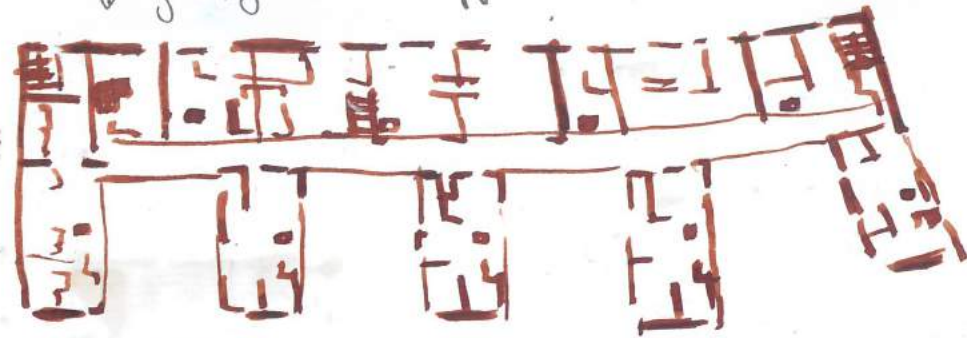


REFLECTING POOL

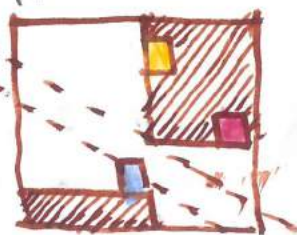


PLAY AREA

- 5 finger form - all apartments have maximum exposure



- 28 unique apartments
- changeable FUSUMA style layout
- Void spaces (pool or play)
- Multiple corridors
- Outdoor entry to apartments



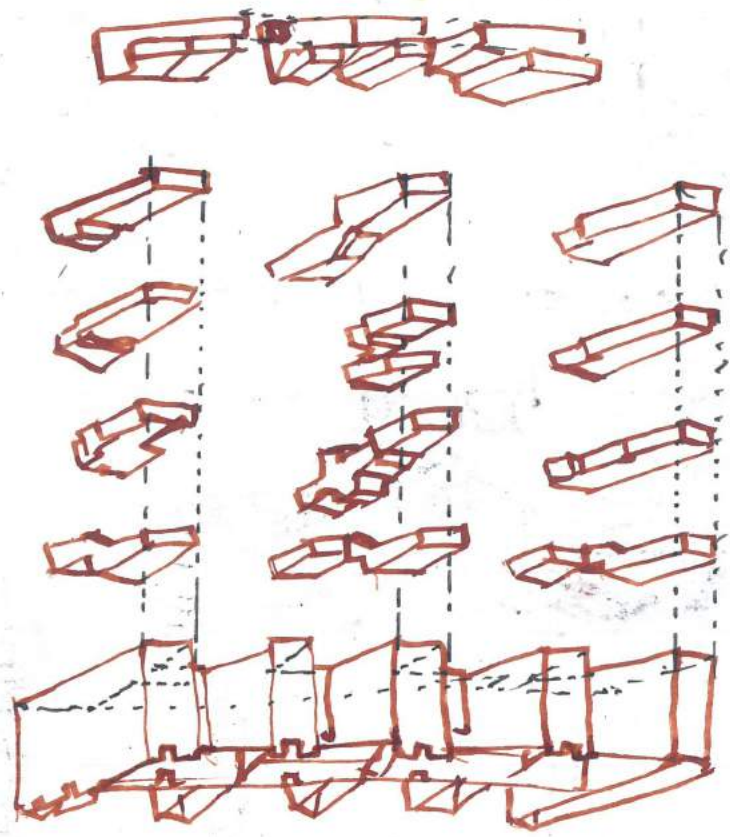
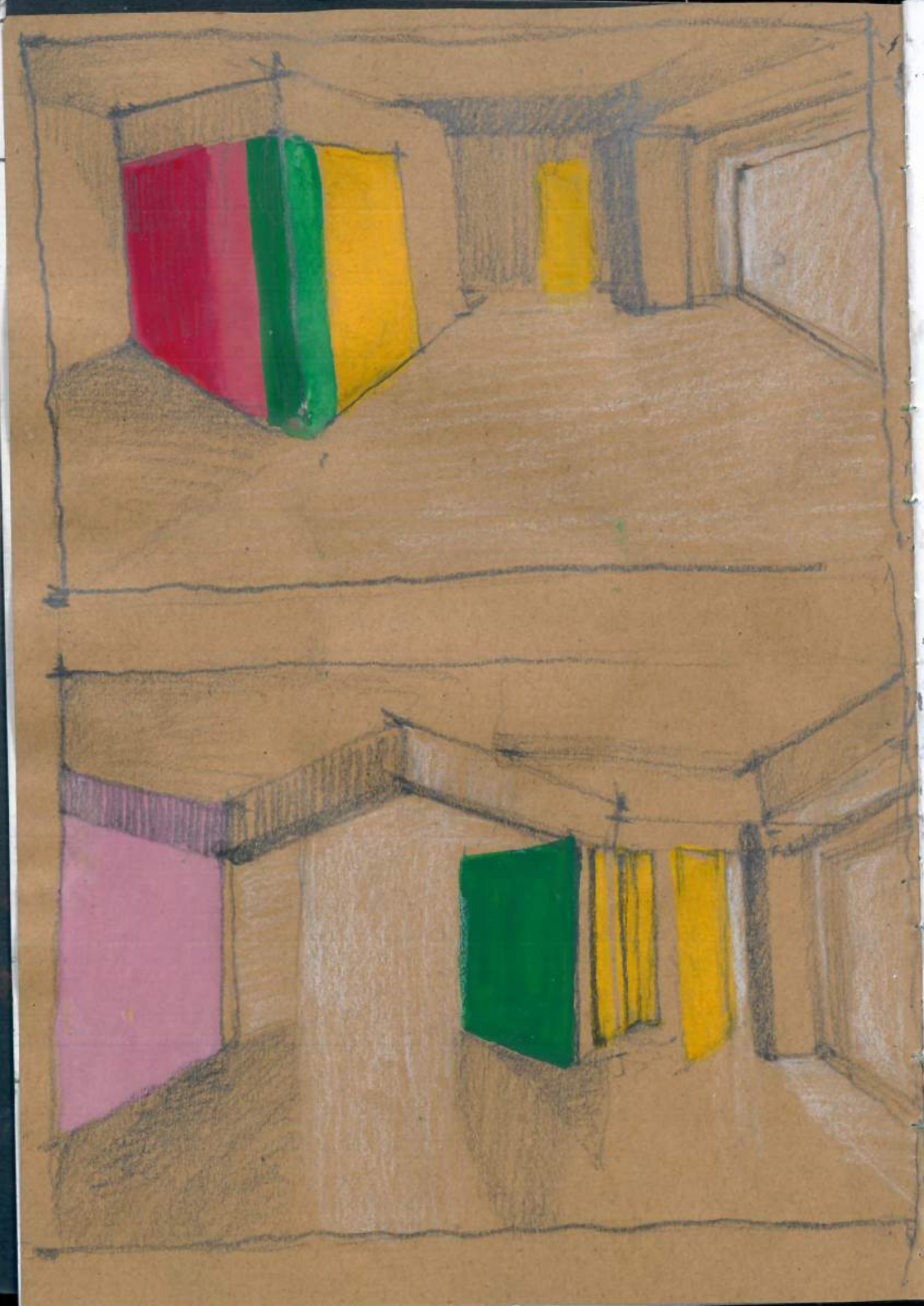
- Sense of passage heightened by 3 types of access - allowing apartments having exterior front doors and by interlocking apartments like a complex chinese box



SCHEMATIC PLAN OF PASSAGES

From hinged space to the silence of void space to ensure emptiness, the south voids are flooded with water, generating flickering reflections. The 28 apartments interior are conceptualised as hinged space, a modern FUSUMA. Interpretation of multi-use concept of

- 2 concepts - articulated space - flexibility
 - empty space



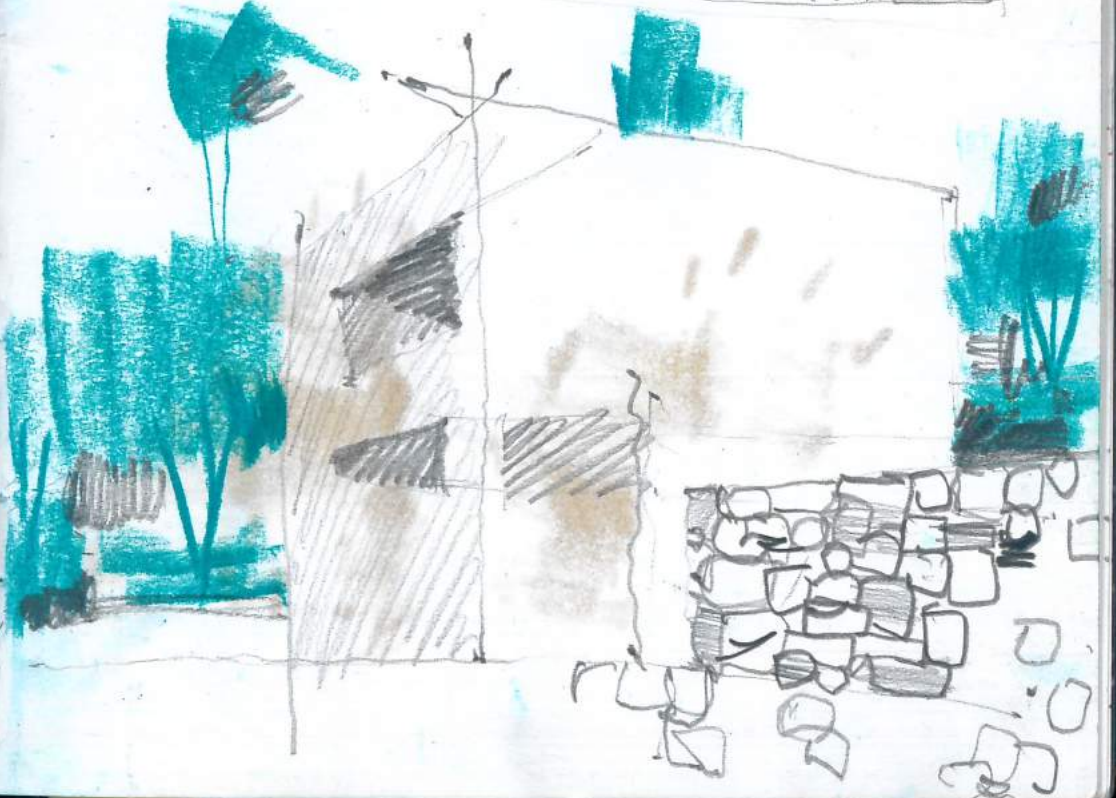
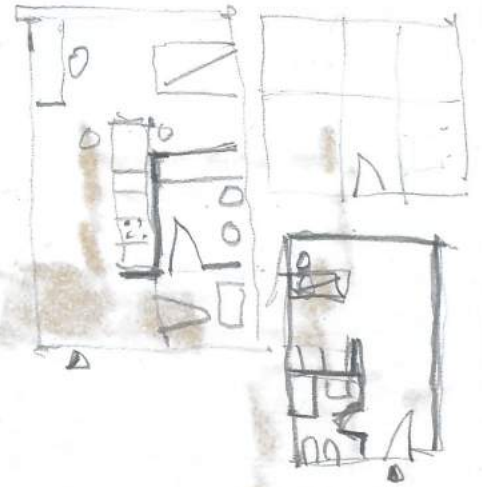
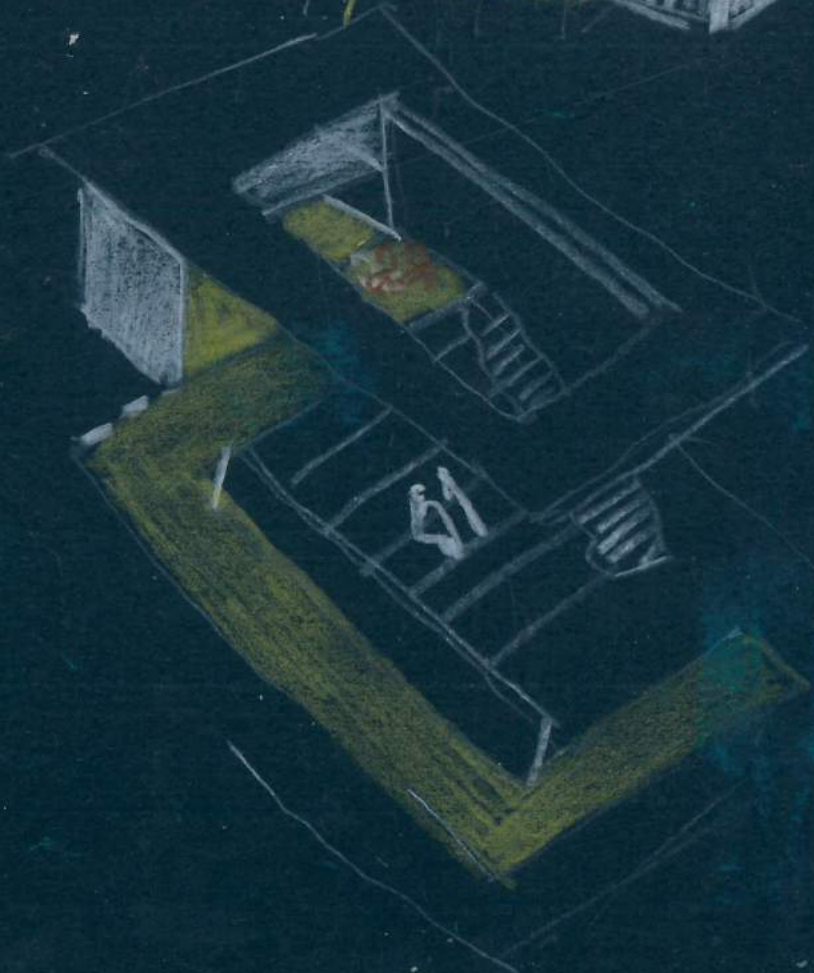
18 variants of 5 types
 L shaped
 I straight shape
 D double level
 M, Di double interconnectivity



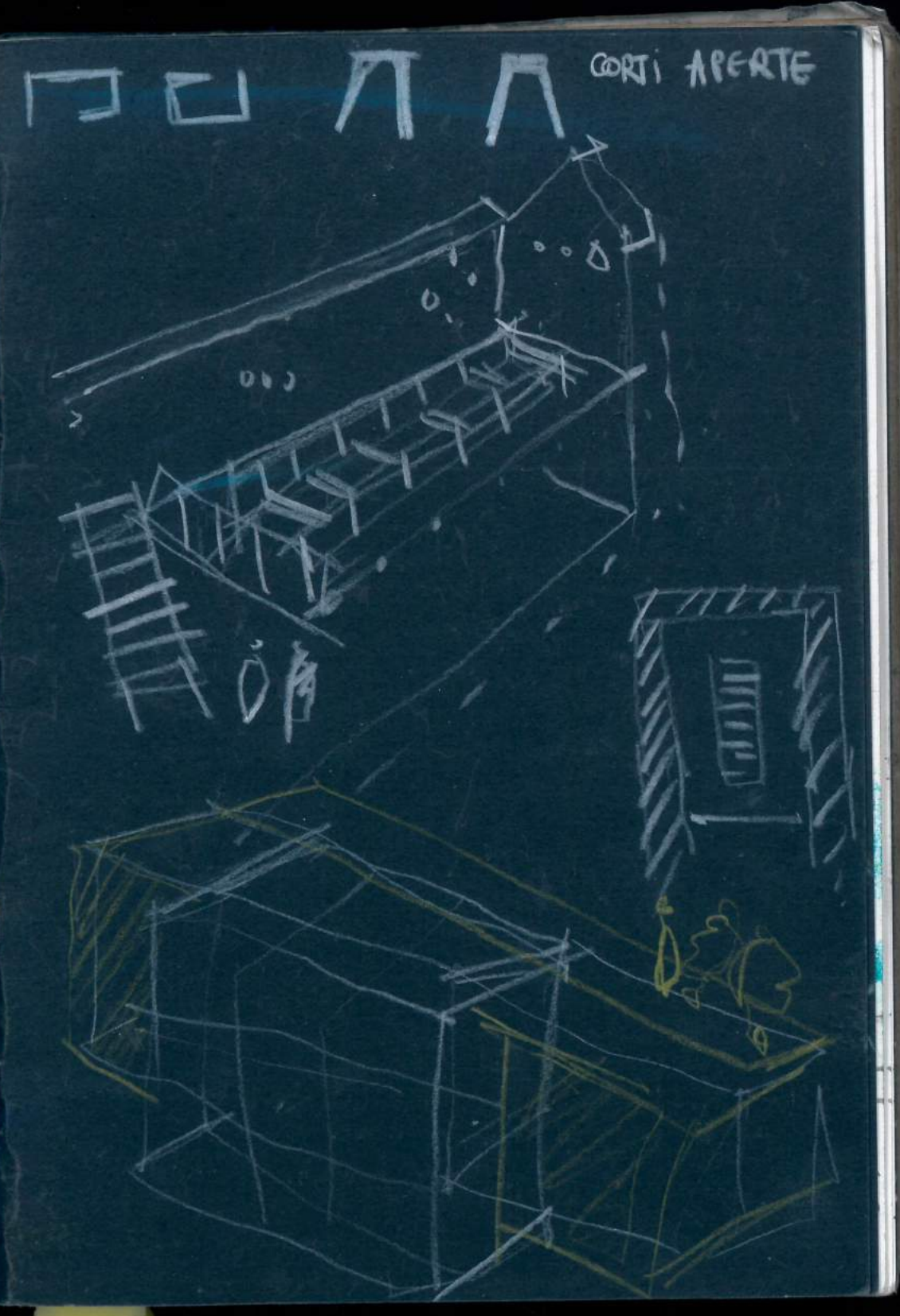
HINGED SPACE HOUSING, FUKUOKA Japan
STEVEN HOLL 1989-1991



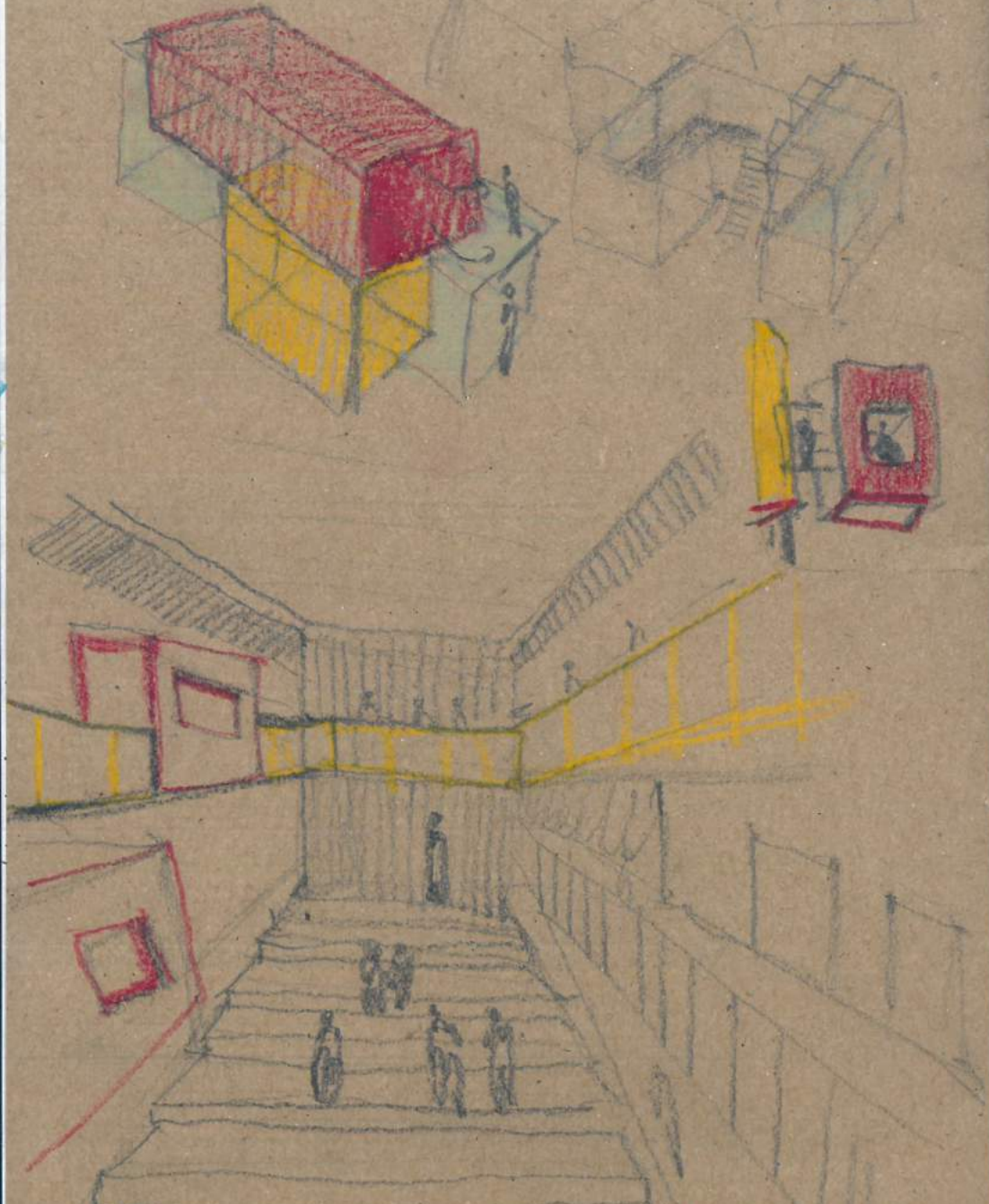
"SENSE OF PASSAGE"
"INTERIOR LIKE A COMPLEX CHINESE BOX"
"INTENTIONALLY SIMPLE FACADE SHEDS TO STREET"
"SEEN AS PART OF THE CITY IN ITS EFFORT TO FORM SPACE RATHER THAN AN ARCHITECTURAL OBJECT"



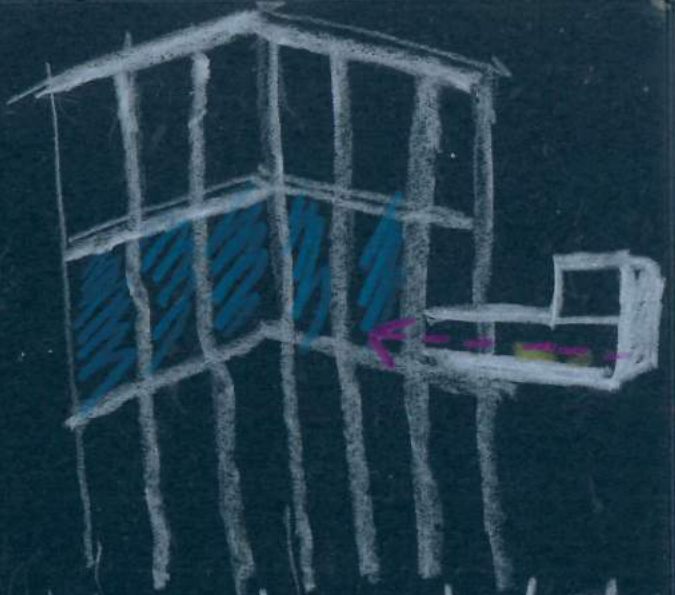




John Habraken - Structure for two residents alternative
Stephen Kordell



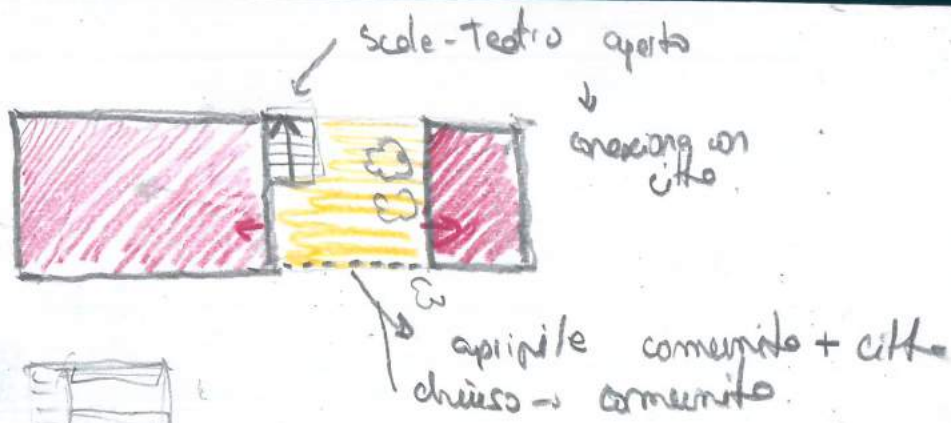
! Gachomo Perse - Pluralist tower



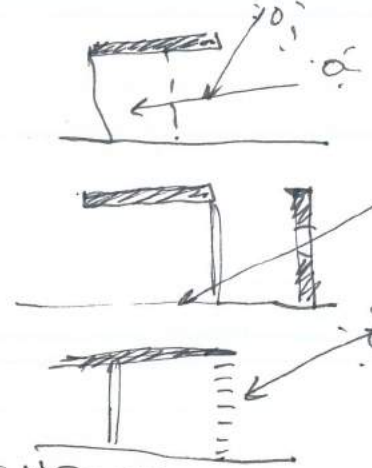
independent concrete structure
prefabricated
→ apartments come and slide
the frame



C. XIAN - LIGHT AND SPACE



- Come luce definire un spazio interno
- Tetsuo architects
- Alvaro Siza: finestra base, finestra alta
- Tema di filtro
- Finestra potrebbe essere anche un spazio

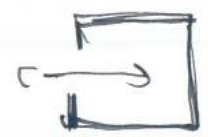


- Stato di Roma
- convento des invades
- Lucarne murale non segnando esistente
- alme woods

Gio Ponti -> finestra articolate 1954

Gen Kurokawa - Boyd Taylor

F. VENEZIA
GOARDARE



- Pietro Perugino
- luce non diretta
- > A. Aalto

Finestra come - cornice



- spazio abitabile

- parete



- Colson - Zanetti

- giunto



- AKIRA SAKAKI

Ascolto - posto protetto



SOGGIA -> transizione da un spazio fra alto
Transition in architecture

- soglia con paesaggio
- Colson - caso per nitter

Spazi studi

Pierre Koenig

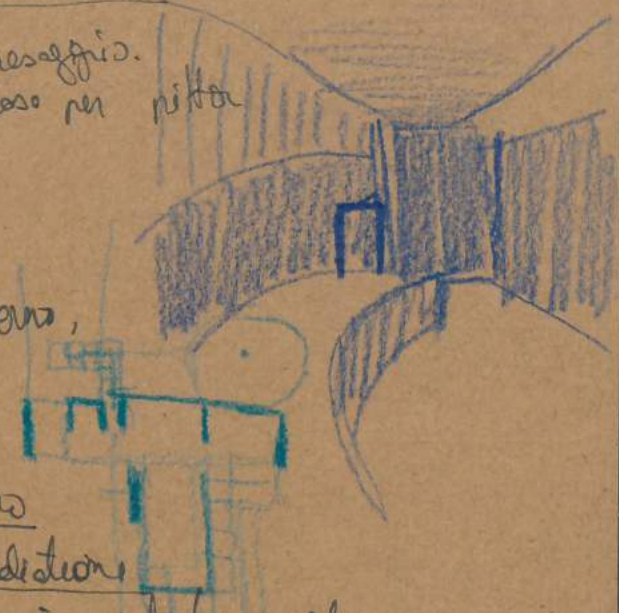
- non si capisce dove interno, esterno comincia
- tema scenografico

Joko Ponder Rikuro

Sopra - spazio di meditazione

Salotto - posto semi-privato / semi-pubblico

SOGGIA - PROSSIMA - privacy che a una persona

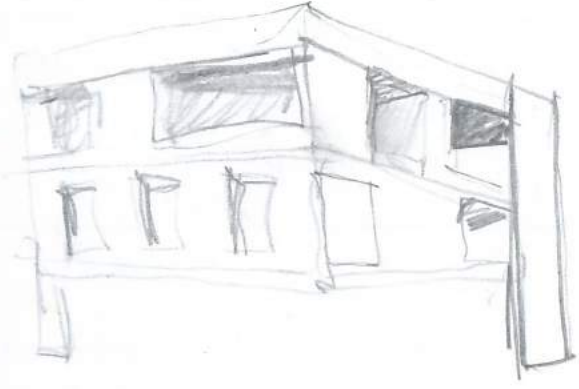
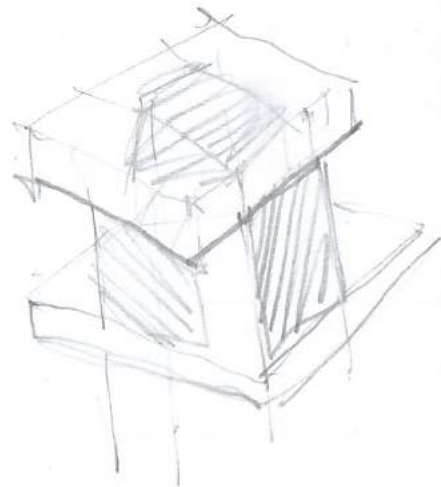
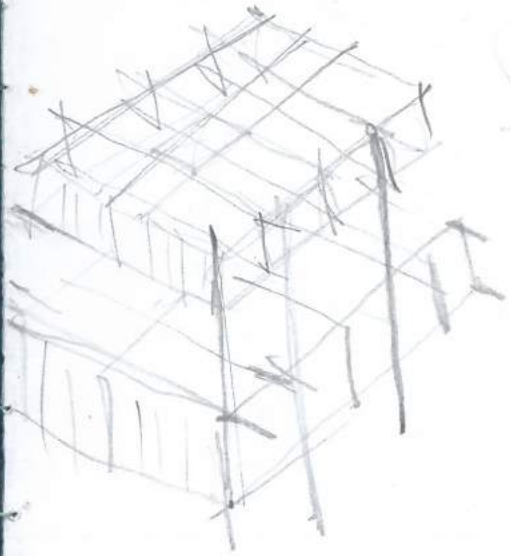
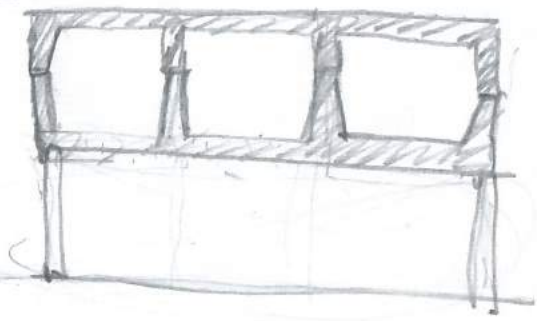
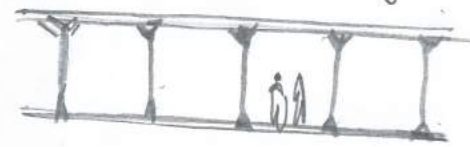


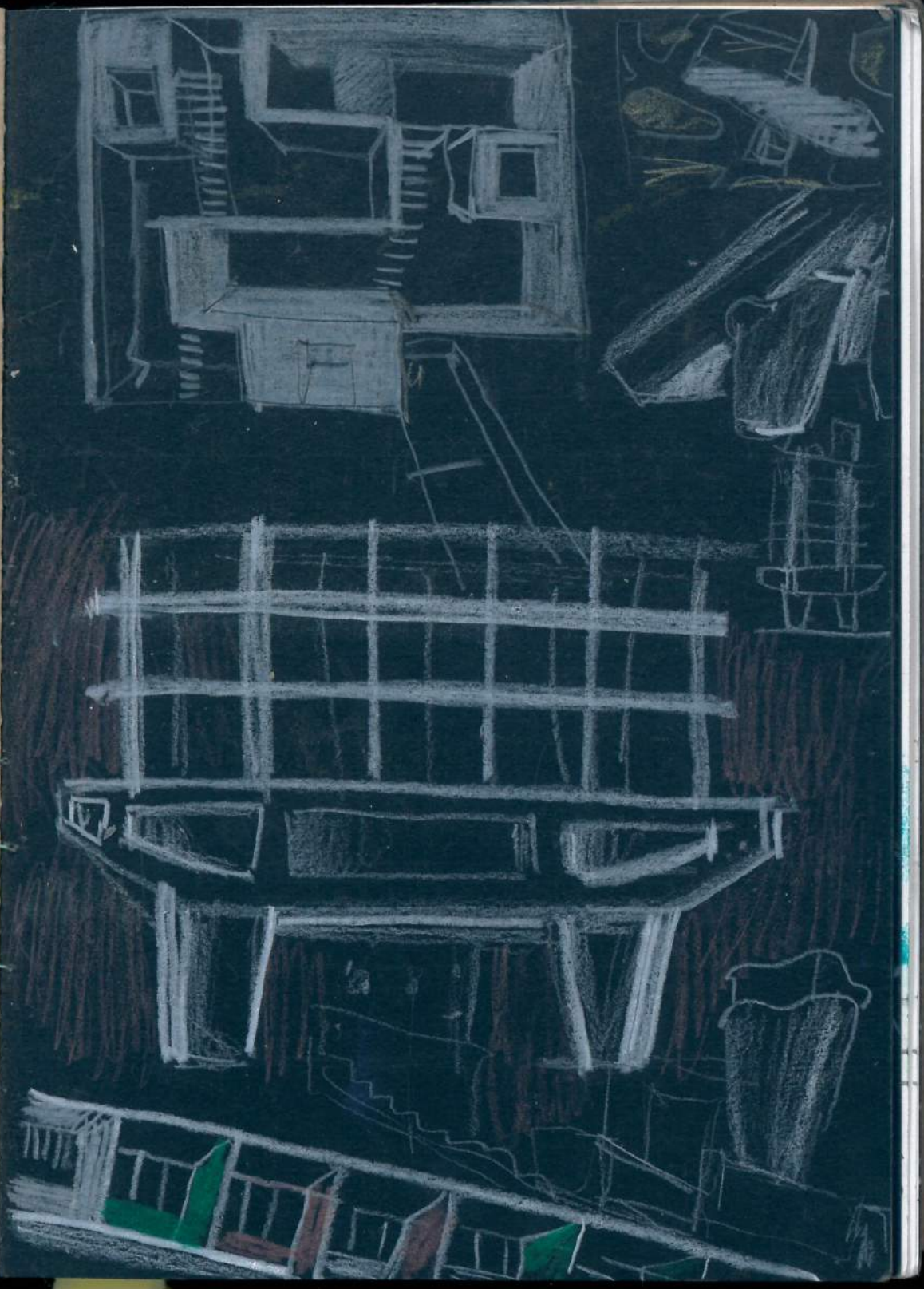
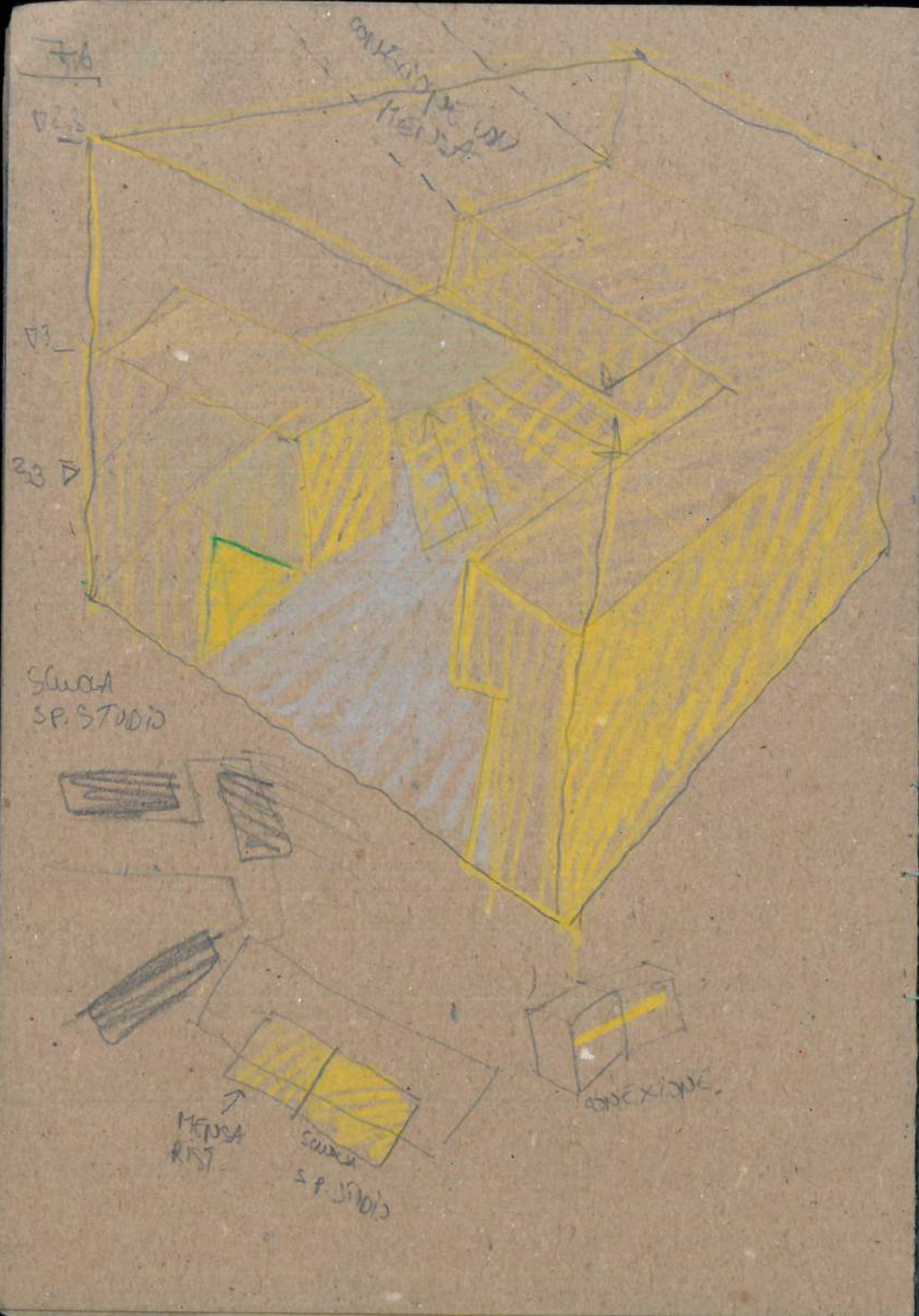


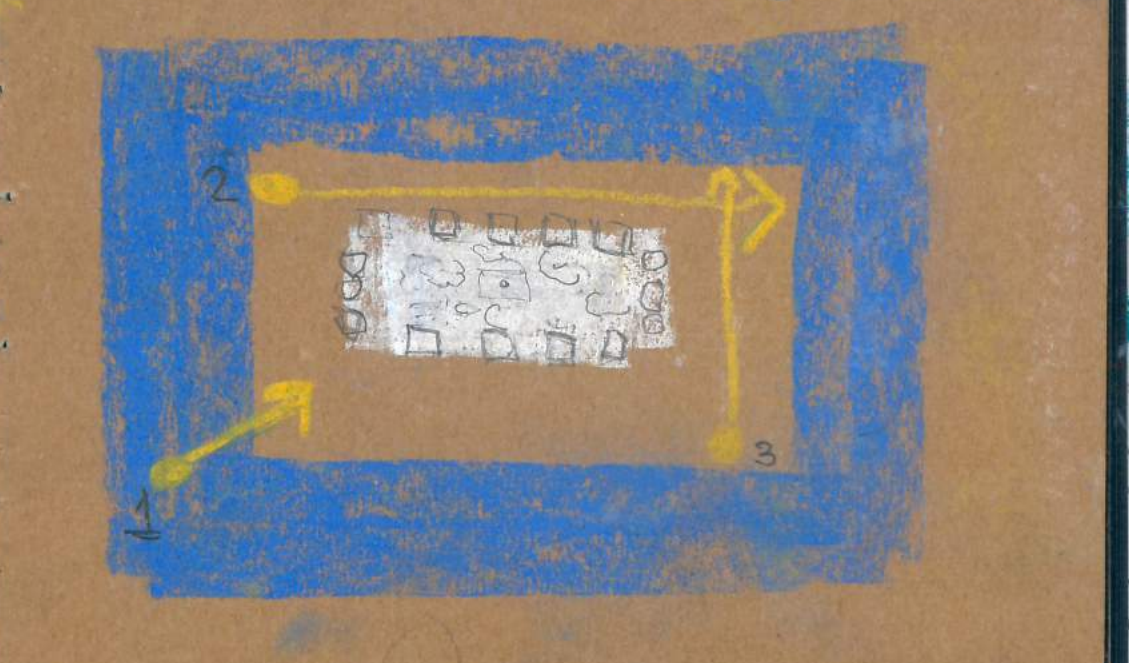
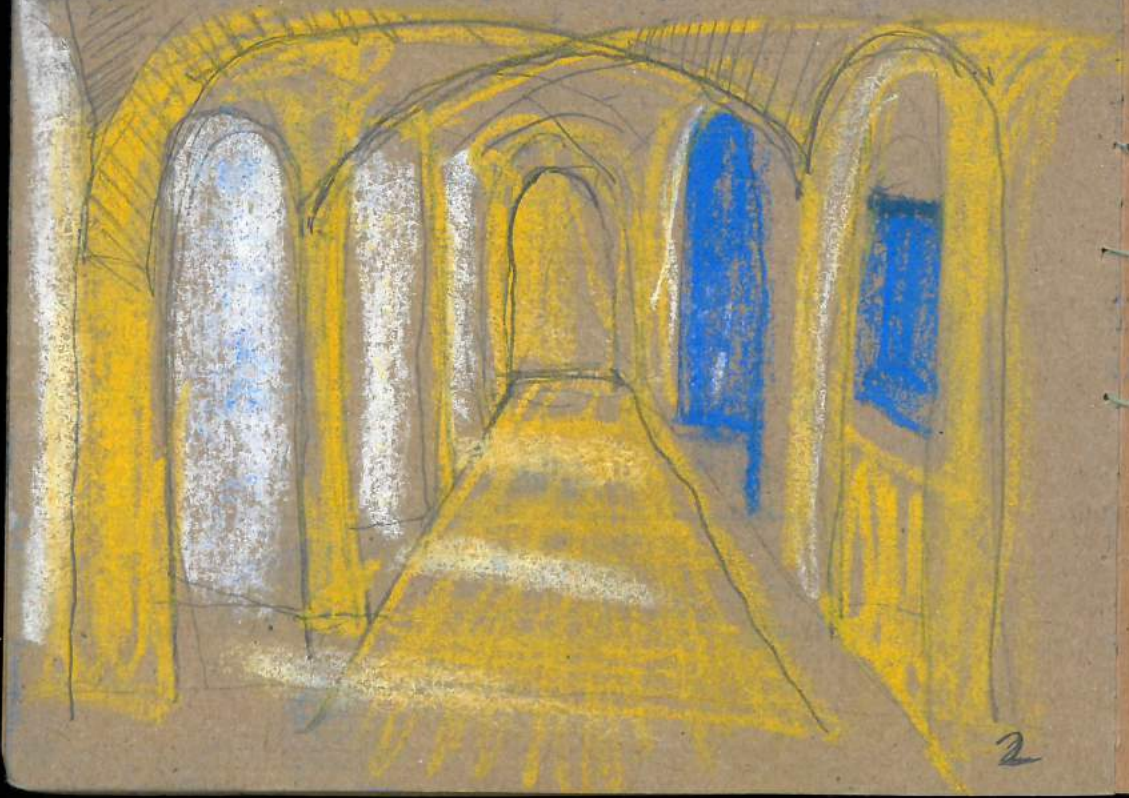
Privacy - Spazi collettivi - Adiretta luce monochroma
 - Spazi senza funzioni.
 - Attraversabile... allego città.

VIERENDEEL GIRDER

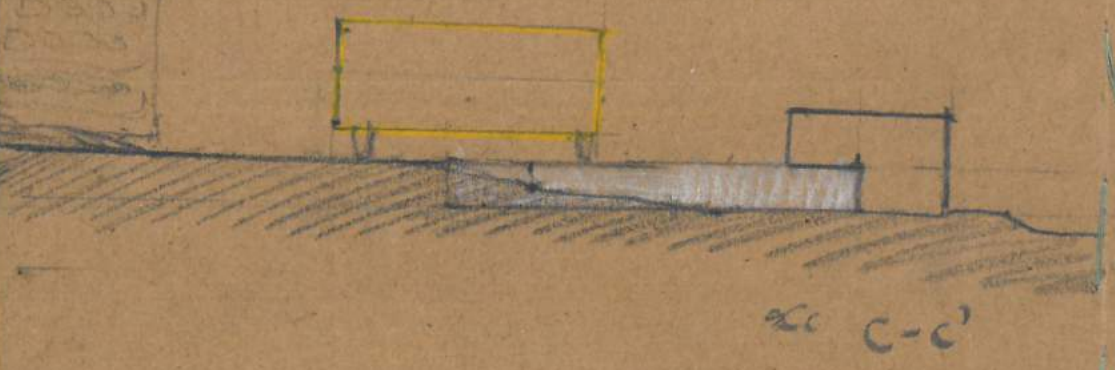
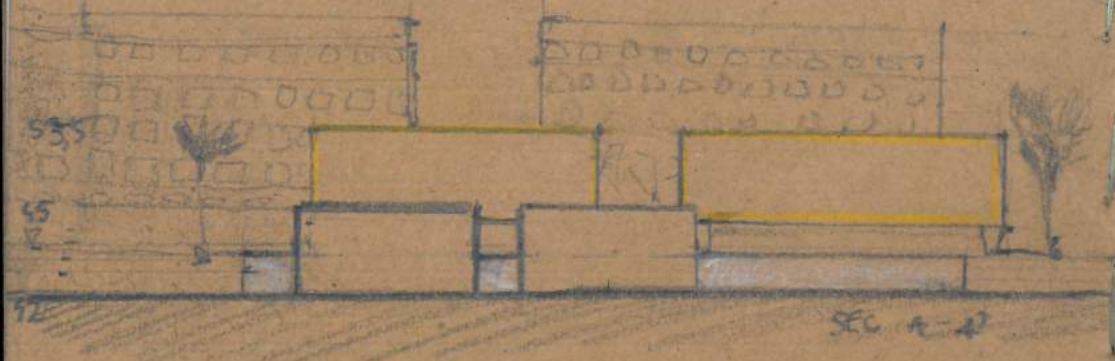
- an open frame N-truss without diagonal members, with rigid joints between the top and bottom chords and the verticals. (C = open-frame girder)



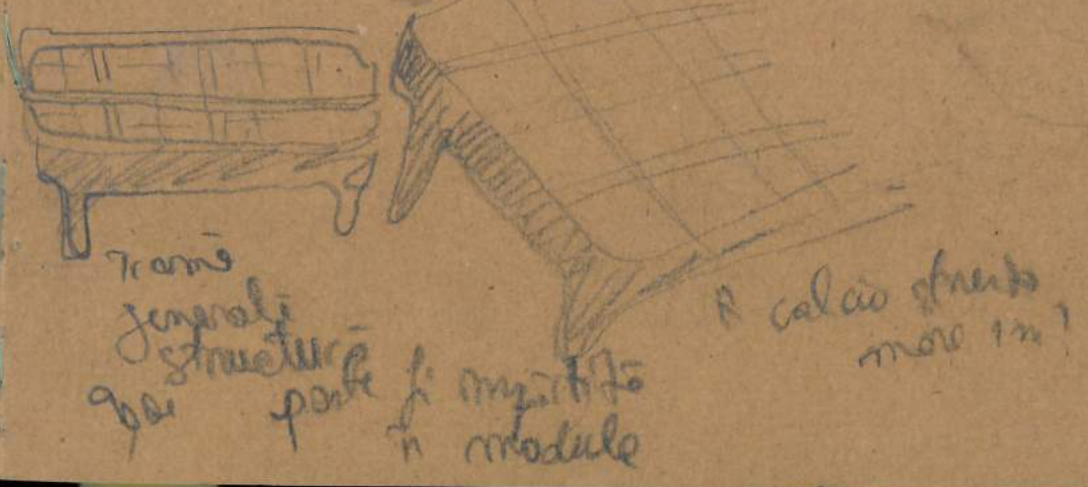




Accademia di Romania. interior court perspectives 2019



Student housing complex
Paris



Trame
generale
structurale
per parte di
in modulo

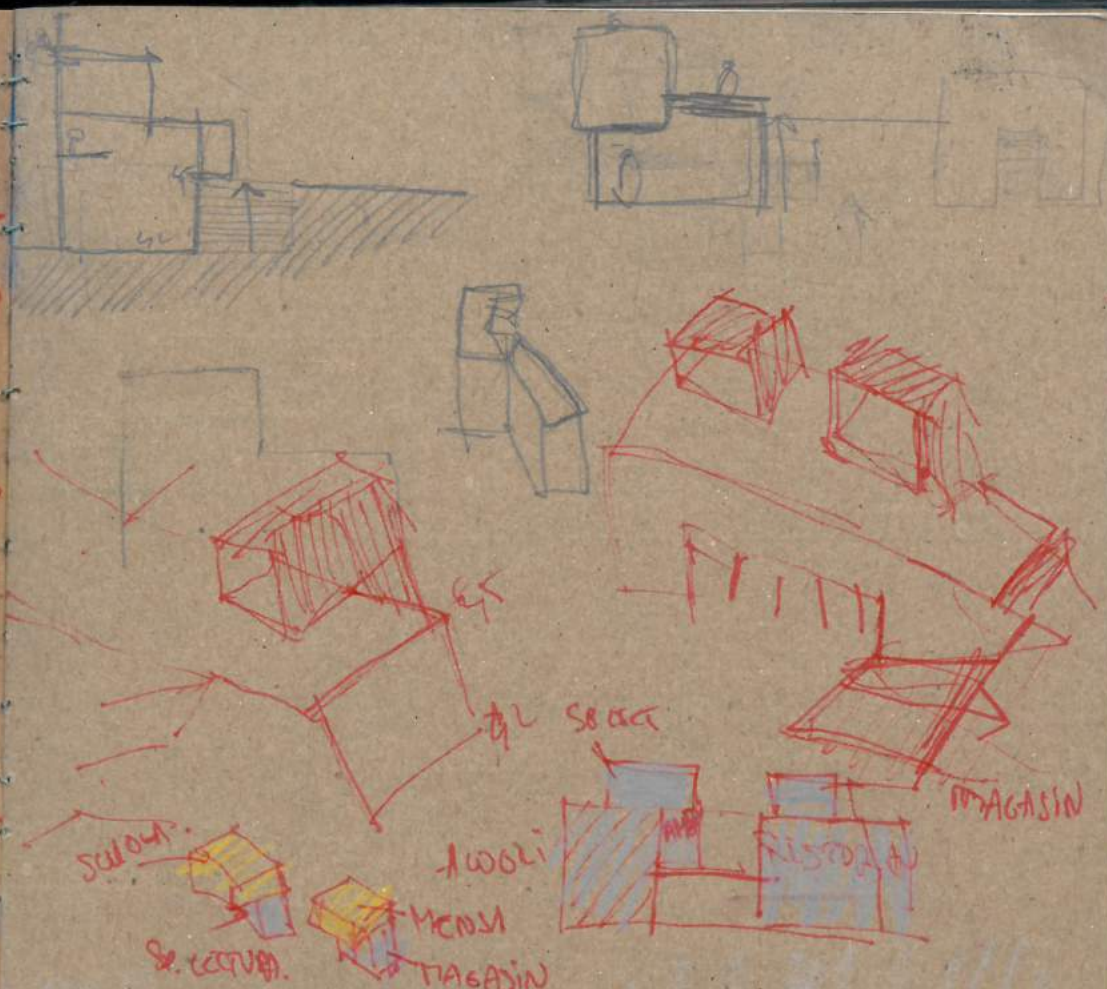
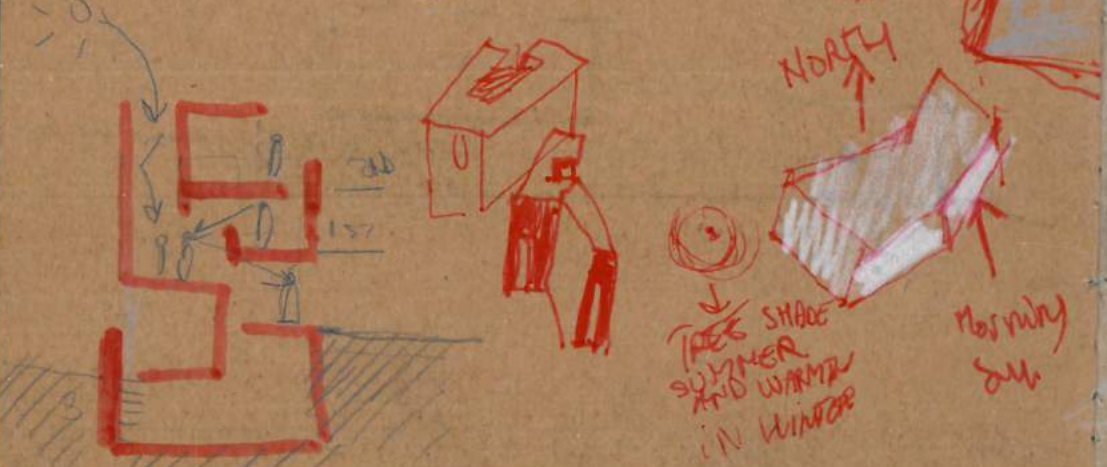
R calce strutto
more in?

SEQUENZA - OGNI UNA DISEGNO A L'ANTICIPAZIONE DI PROSSIMO.

3 DISEGNI ← SEQUENZA. ATMOSFERA - 3 DIFFERENTI UCE



STRADA SPAZIALE 752





Cucine → living
per tutti spazi
comuni

CUCINETE!!!

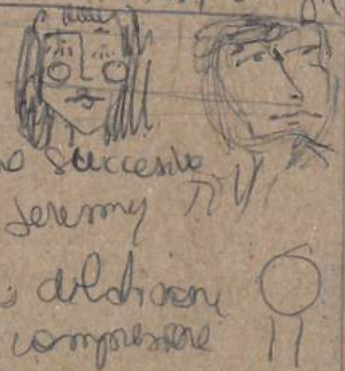
- Golden Lane, A + P Smithson, Londra 1977 - disegno
- Remington Gio Kijuel, Bruno Zevi
- Anzani Luigi, Torino, 1971. disegno
Emilio Mendelsohn

Missaia, Maria, Volume, Ombro
Volume come luce e ombra.
L. Loda

(1 km - Area del Campo Sesto
- disegno)

M. Breuer, Piero Sartogo, Lino Boiardi
L. Loda - Palazzo di Giovanni, Roma 1951 disegno

Lino Boiardi
Tempo, Movimenti, Segue
Rappresentazione
Sonia Wigglesworth ad Jeremy
Wig Moretti - San Pietro
spazio unico modello di lavoro
compartire



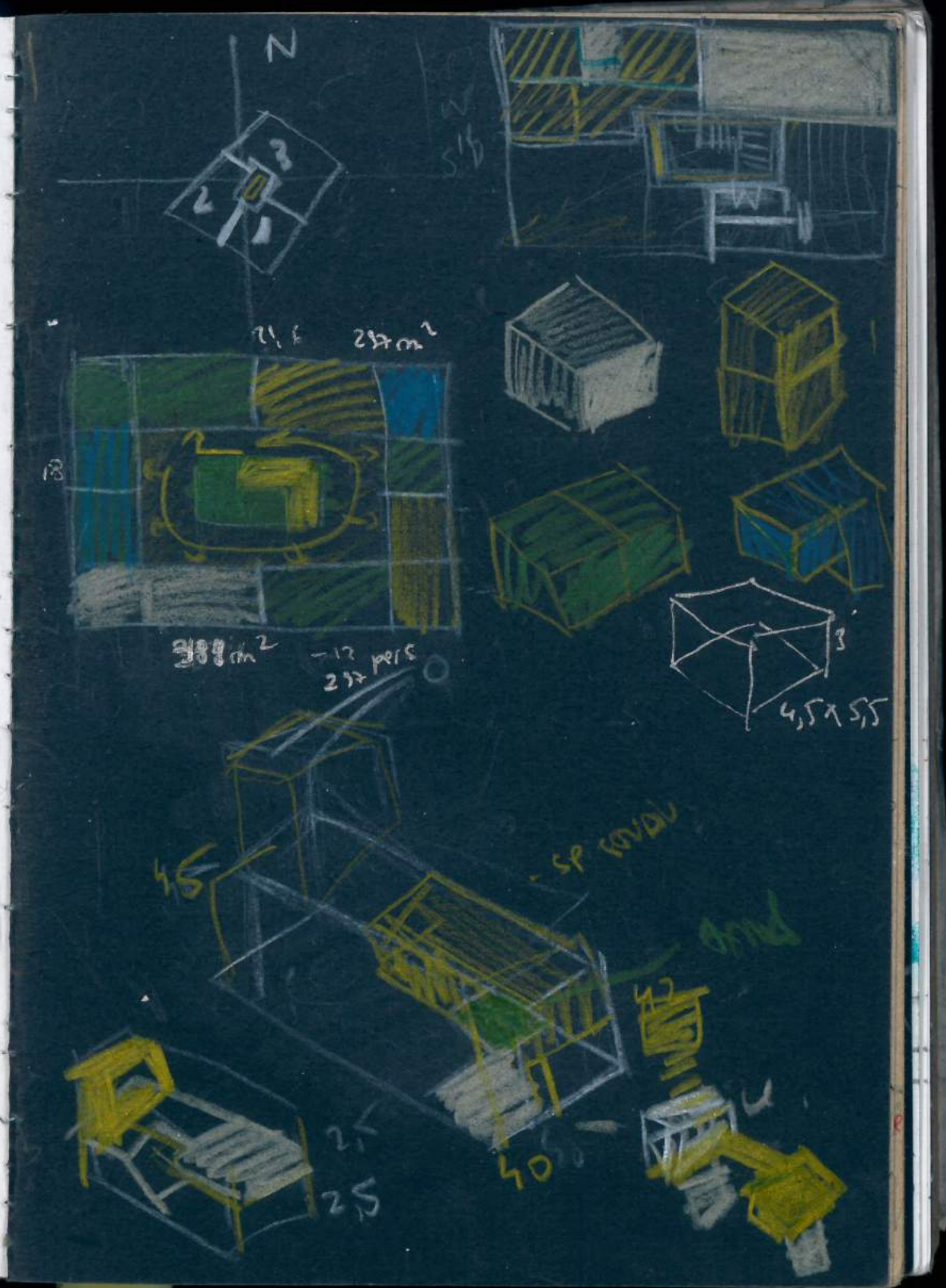
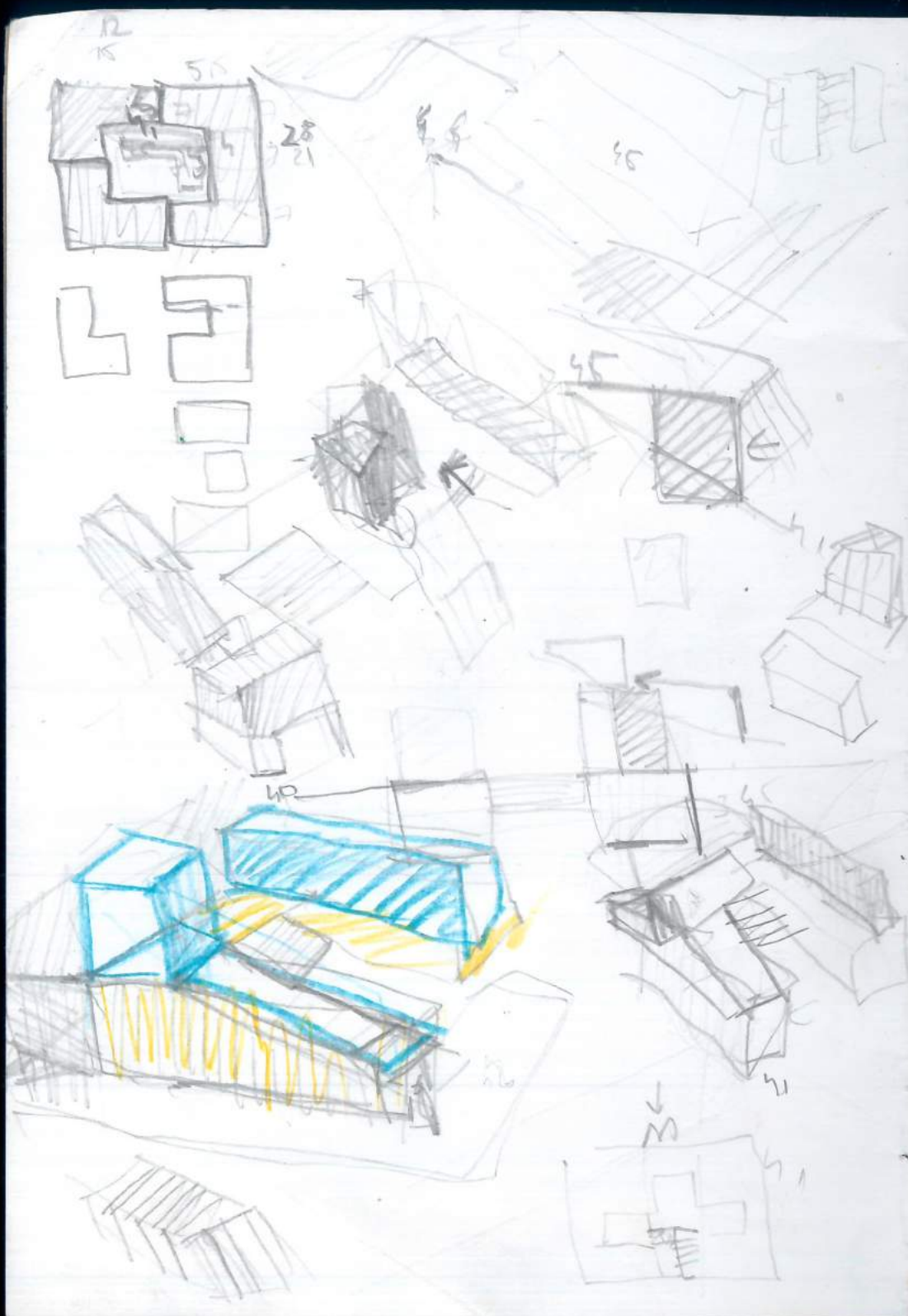
Golden Lane - The course Townscape
Kevin Lynch

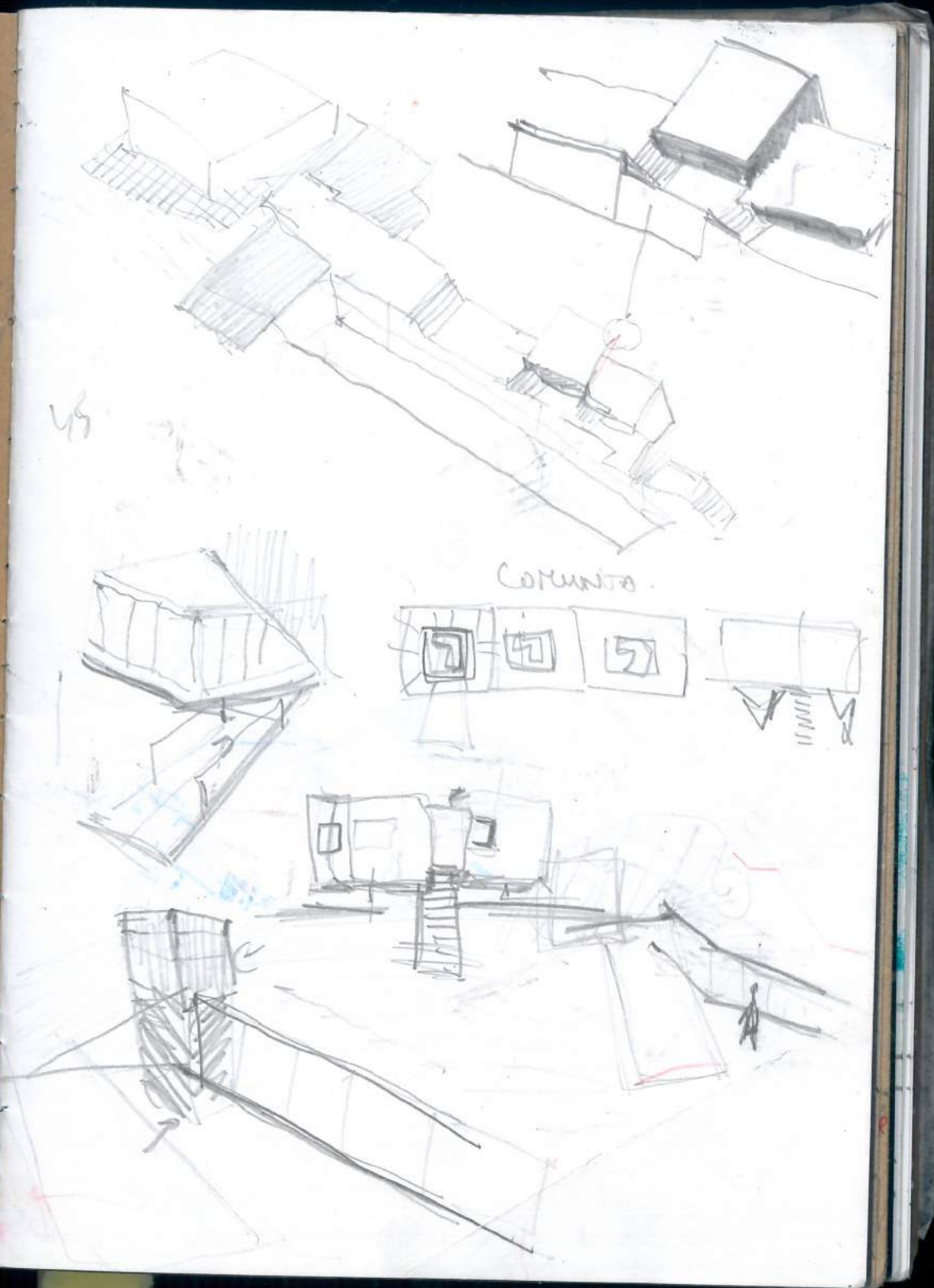
chronic la sequente
di un habitat per ricercatori con storie
di ricerca
Cherubino Gambardella
- metodo il tecniche
la Metropoli. Le sue case
2015
Ameghino - ornamenta

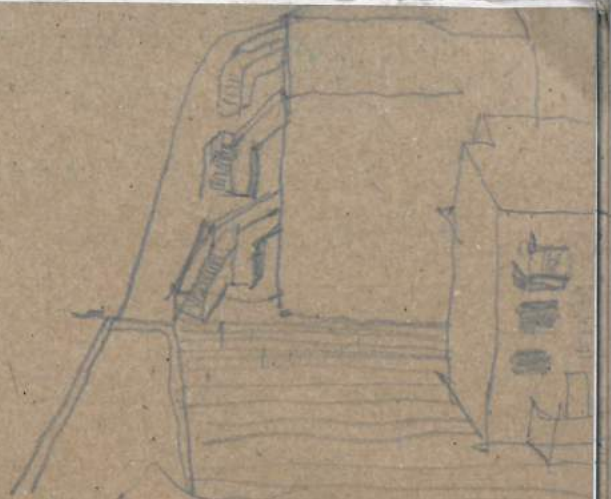
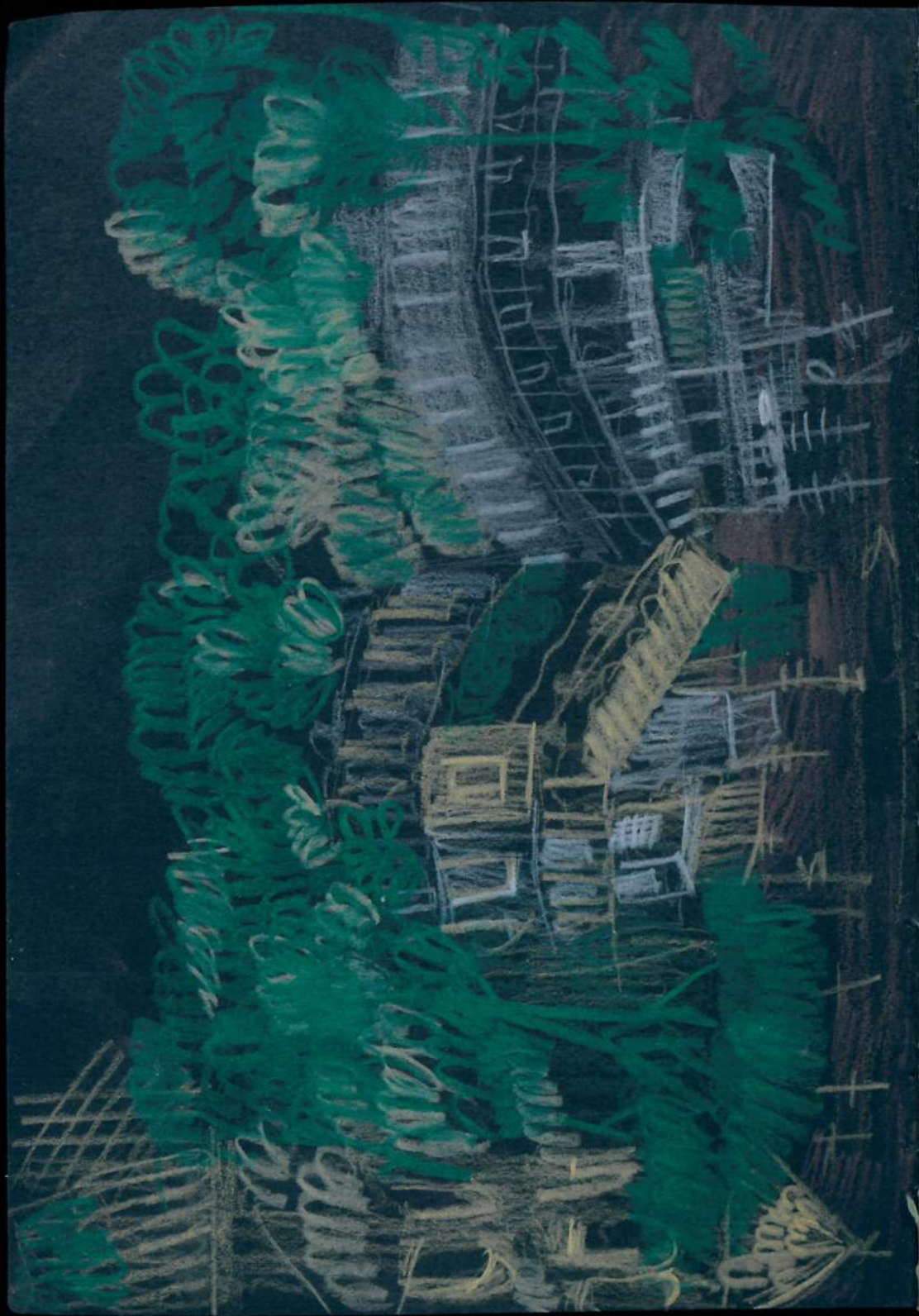
Mostre Signora del Ceste - P. Scarpino
P. Zamboni - Thérèse Vitz
Atmosfera Ricercatore

TURNER
FALA ATELIER









Enrico
Del Delfino
- houses for workers
Montivelle